

Product datasheet for **TA344911**

VPS35 Rabbit Polyclonal Antibody

Product data:

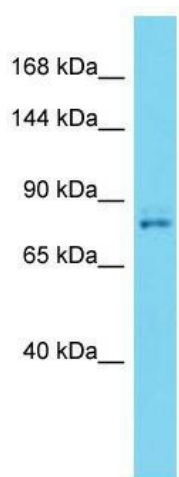
Product Type:	Primary Antibodies
Applications:	WB
Recommended Dilution:	WB
Reactivity:	Mouse
Host:	Rabbit
Isotype:	IgG
Clonality:	Polyclonal
Immunogen:	The immunogen for Anti-Vps35 antibody is: synthetic peptide directed towards the C-terminal region of Mouse Vps35. Synthetic peptide located within the following region: VLNQLIQKIREDLPNLESSEETEQINKHFHNTLEHLRSRRESPESEGPY
Formulation:	Liquid. Purified antibody supplied in 1x PBS buffer with 0.09% (w/v) sodium azide and 2% sucrose. <i>Note that this product is shipped as lyophilized powder to China customers.</i>
Purification:	Affinity Purified
Conjugation:	Unconjugated
Storage:	Store at -20°C as received.
Stability:	Stable for 12 months from date of receipt.
Predicted Protein Size:	88 kDa
Gene Name:	VPS35 retromer complex component
Database Link:	NP_060676 Entrez Gene 65114 Mouse Q96QK1
Background:	Vps35 is an essential component of the retromer complex, a complex required to retrieve lysosomal enzyme receptors (IGF2R and M6PR) from endosomes to the trans-Golgi network. It is also required to regulate transcytosis of the polymeric immunoglobulin receptor (pIgR-pIgA).
Synonyms:	MEM3; PARK17



[View online »](#)

Note: Immunogen Sequence Homology: Dog: 100%; Pig: 100%; Rat: 100%; Horse: 100%; Human: 100%; Mouse: 100%; Bovine: 100%; Rabbit: 100%; Zebrafish: 93%; Guinea pig: 93%

Product images:



Host: Rabbit; Target Name: Vps35; Sample Tissue: Mouse Lung lysates; Antibody Dilution: 1.0 ug/ml