

Product datasheet for **TA344910**

ARFGAP1 Rabbit Polyclonal Antibody

Product data:

Product Type:	Primary Antibodies
Applications:	WB
Recommended Dilution:	WB
Reactivity:	Human
Host:	Rabbit
Isotype:	IgG
Clonality:	Polyclonal
Immunogen:	The immunogen for anti-ARFGAP1 antibody: synthetic peptide directed towards the middle region of human ARFGAP1. Synthetic peptide located within the following region: GQPQSVTASSDKAFEDWLNDLGSYQGAQGNRYVGFNGTPPPQKKEDDFL
Formulation:	Liquid. Purified antibody supplied in 1x PBS buffer with 0.09% (w/v) sodium azide and 2% sucrose. <i>Note that this product is shipped as lyophilized powder to China customers.</i>
Purification:	Affinity Purified
Conjugation:	Unconjugated
Storage:	Store at -20°C as received.
Stability:	Stable for 12 months from date of receipt.
Predicted Protein Size:	45 kDa
Gene Name:	ADP ribosylation factor GTPase activating protein 1
Database Link:	NP_060679 Entrez Gene 55738 Human Q8N6T3



[View online »](#)

Background:

The protein encoded by this gene is a GTPase-activating protein (GAP) which associates with the Golgi apparatus and which interacts with ADP-ribosylation factor 1 (ARF1). The encoded protein promotes hydrolysis of ARF1-bound GTP and is required for the dissociation of coat proteins from Golgi-derived membranes and vesicles. Dissociation of the coat proteins is required for the fusion of these vesicles with target compartments. The activity of this protein is stimulated by phosphoinositides and inhibited by phosphatidylcholine. Two transcript variants encoding different isoforms have been found for this gene.

Synonyms:

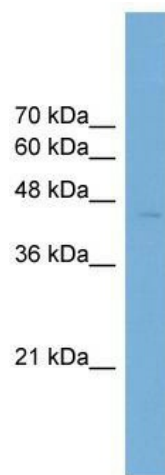
ARF1GAP; HRIHFB2281

Note:

Immunogen Sequence Homology: Human: 100%; Dog: 93%; Pig: 93%; Rat: 93%; Mouse: 93%; Bovine: 93%; Rabbit: 93%; Guinea pig: 93%

Protein Pathways:

Endocytosis

Product images:

WB Suggested Anti-ARFGAP1 Antibody Titration:
0.2-1 ug/ml; ELISA Titer: 1:312500; Positive
Control: Transfected 293T