

## Product datasheet for **TA344908**

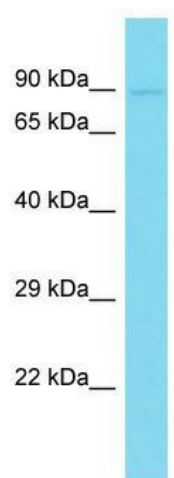
### ENAH Rabbit Polyclonal Antibody

#### Product data:

Product Type:	Primary Antibodies
Applications:	WB
Recommended Dilution:	WB
Reactivity:	Mouse
Host:	Rabbit
Isotype:	IgG
Clonality:	Polyclonal
Immunogen:	The immunogen for Anti-Enah antibody is: synthetic peptide directed towards the C-terminal region of Mouse Enah. Synthetic peptide located within the following region: RRIAEKGSTIETEYKEDRNEDAEPITAKAPSTSTPEPTRKWPWERTNTMNG
Formulation:	Liquid. Purified antibody supplied in 1x PBS buffer with 0.09% (w/v) sodium azide and 2% sucrose. <i>Note that this product is shipped as lyophilized powder to China customers.</i>
Purification:	Affinity Purified
Conjugation:	Unconjugated
Storage:	Store at -20°C as received.
Stability:	Stable for 12 months from date of receipt.
Predicted Protein Size:	84 kDa
Gene Name:	enabled homolog (Drosophila)
Database Link:	<a href="#">NP_001008493</a> <a href="#">Entrez Gene 13800 Mouse</a> <a href="#">Q8N8S7</a>
Background:	The function of this protein remains unknown.
Synonyms:	ENA; MENA; NDPP1
Note:	Immunogen Sequence Homology: Dog: 100%; Pig: 100%; Horse: 100%; Human: 100%; Rat: 93%; Mouse: 92%; Bovine: 86%; Guinea pig: 86%
Protein Pathways:	Regulation of actin cytoskeleton



[View online »](#)

**Product images:**

Host: Rabbit; Target Name: Enah; Sample Tissue: Mouse Thymus lysates; Antibody Dilution: 1.0 ug/ml