

Product datasheet for **TA344907**

PNMA8A Rabbit Polyclonal Antibody

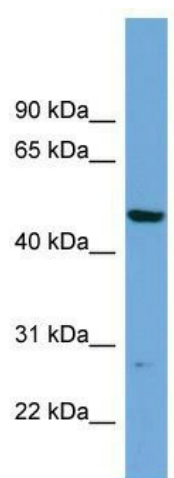
Product data:

Product Type:	Primary Antibodies
Applications:	WB
Recommended Dilution:	WB
Reactivity:	Human
Host:	Rabbit
Isotype:	IgG
Clonality:	Polyclonal
Immunogen:	The immunogen for anti-PNMAL1 antibody: synthetic peptide directed towards the middle region of human PNMAL1. Synthetic peptide located within the following region: APMRKKKKVSLGPVSYVLVDSSEDRKKPVMPKKGPGSRREASDQKAPRGQ
Formulation:	Liquid. Purified antibody supplied in 1x PBS buffer with 0.09% (w/v) sodium azide and 2% sucrose.
Purification:	Affinity Purified
Conjugation:	Unconjugated
Storage:	Store at -20°C as received.
Stability:	Stable for 12 months from date of receipt.
Predicted Protein Size:	48 kDa
Gene Name:	paraneoplastic Ma antigen family-like 1
Database Link:	NP_060685 Entrez Gene 55228 Human Q86V59
Background:	The function of this protein remains unknown.
Synonyms:	FLJ10781
Note:	Immunogen Sequence Homology: Human: 100%; Dog: 91%



[View online »](#)

Product images:



WB Suggested Anti-PNMAL1 Antibody Titration:
0.2-1 ug/ml; ELISA Titer: 1:1562500; Positive
Control: HepG2 cell lysate