

Product datasheet for **TA344906**

PANK4 Rabbit Polyclonal Antibody

Product data:

Product Type:	Primary Antibodies
Applications:	WB
Recommended Dilution:	WB
Reactivity:	Human
Host:	Rabbit
Isotype:	IgG
Clonality:	Polyclonal
Immunogen:	The immunogen for anti-PANK4 antibody: synthetic peptide directed towards the N terminal of human PANK4. Synthetic peptide located within the following region: MAECGASGSGSSGDSLKSLTLPPEIFRNLENKRFAIDIGGSLTKLAY
Formulation:	Liquid. Purified antibody supplied in 1x PBS buffer with 0.09% (w/v) sodium azide and 2% sucrose.
Purification:	Affinity Purified
Conjugation:	Unconjugated
Storage:	Store at -20°C as received.
Stability:	Stable for 12 months from date of receipt.
Predicted Protein Size:	86 kDa
Gene Name:	pantothenate kinase 4
Database Link:	NP_060686 Entrez Gene 55229 Human Q9NVE7
Background:	This gene encodes a protein belonging to the pantothenate kinase family. Pantothenate kinase is a key regulatory enzyme in the biosynthesis of coenzyme A (CoA) in bacteria and mammalian cells. It catalyzes the first committed step in the universal biosynt
Synonyms:	DKFZp547M242; FLJ10782
Note:	Immunogen Sequence Homology: Dog: 100%; Pig: 100%; Rat: 100%; Human: 100%; Mouse: 100%; Bovine: 100%; Guinea pig: 100%; Zebrafish: 82%

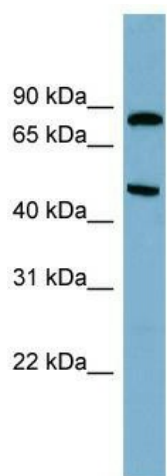


[View online »](#)

Protein Families: Druggable Genome

Protein Pathways: Metabolic pathways, Pantothenate and CoA biosynthesis

Product images:



WB Suggested Anti-PANK4 Antibody Titration:
0.2-1 ug/ml; Positive Control: 721_B cell
lysatePANK4 is supported by BioGPS gene
expression data to be expressed in 721_B