

## Product datasheet for **TA344905**

### **PANK4 Rabbit Polyclonal Antibody**

#### **Product data:**

<b>Product Type:</b>	Primary Antibodies
<b>Applications:</b>	WB
<b>Recommended Dilution:</b>	WB
<b>Reactivity:</b>	Human
<b>Host:</b>	Rabbit
<b>Isotype:</b>	IgG
<b>Clonality:</b>	Polyclonal
<b>Immunogen:</b>	The immunogen for anti-PANK4 antibody: synthetic peptide directed towards the middle region of human PANK4. Synthetic peptide located within the following region: LGAIGAFKLGAEQDNPNQYSWGENYAGSSGLMSASPELGPAQRARSGTFD
<b>Formulation:</b>	Liquid. Purified antibody supplied in 1x PBS buffer with 0.09% (w/v) sodium azide and 2% sucrose. <i>Note that this product is shipped as lyophilized powder to China customers.</i>
<b>Purification:</b>	Affinity Purified
<b>Conjugation:</b>	Unconjugated
<b>Storage:</b>	Store at -20°C as received.
<b>Stability:</b>	Stable for 12 months from date of receipt.
<b>Predicted Protein Size:</b>	86 kDa
<b>Gene Name:</b>	pantothenate kinase 4
<b>Database Link:</b>	<a href="#">NP_060686</a> <a href="#">Entrez Gene 55229 Human</a> <a href="#">Q9NVE7</a>
<b>Background:</b>	This gene encodes a protein belonging to the pantothenate kinase family. Pantothenate kinase is a key regulatory enzyme in the biosynthesis of coenzyme A (CoA) in bacteria and mammalian cells. It catalyzes the first committed step in the universal biosynt
<b>Synonyms:</b>	DKFZp547M242; FLJ10782
<b>Note:</b>	Immunogen Sequence Homology: Dog: 100%; Pig: 100%; Rat: 100%; Human: 100%; Mouse: 100%; Bovine: 100%; Guinea pig: 100%; Zebrafish: 93%

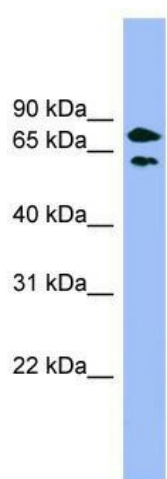


[View online »](#)

Protein Families: Druggable Genome

Protein Pathways: Metabolic pathways, Pantothenate and CoA biosynthesis

### Product images:



WB Suggested Anti-PANK4 Antibody Titration:  
0.2-1 ug/ml; ELISA Titer: 1:1562500; Positive  
Control: HepG2 cell lysate