

Product datasheet for **TA344904**

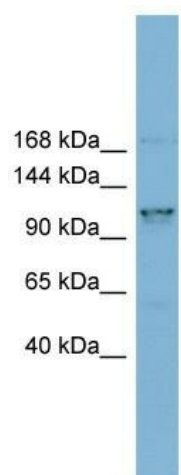
CCDC87 Rabbit Polyclonal Antibody

Product data:

Product Type:	Primary Antibodies
Applications:	WB
Recommended Dilution:	WB
Reactivity:	Human
Host:	Rabbit
Isotype:	IgG
Clonality:	Polyclonal
Immunogen:	The immunogen for anti-CCDC87 antibody: synthetic peptide directed towards the N terminal of human CCDC87. Synthetic peptide located within the following region: MMEPPKPEPELQRFYHLLRPLSLFPTRTTTSPEPQKRPPQEGRILQSFPL
Formulation:	Liquid. Purified antibody supplied in 1x PBS buffer with 0.09% (w/v) sodium azide and 2% sucrose. <i>Note that this product is shipped as lyophilized powder to China customers.</i>
Purification:	Affinity Purified
Conjugation:	Unconjugated
Storage:	Store at -20°C as received.
Stability:	Stable for 12 months from date of receipt.
Predicted Protein Size:	96 kDa
Gene Name:	coiled-coil domain containing 87
Database Link:	NP_060689 Entrez Gene 55231 Human Q9NVE4
Background:	The function of this protein remains unknown.
Synonyms:	FLJ10786
Note:	Immunogen Sequence Homology: Human: 100%



[View online »](#)

Product images:

WB Suggested Anti-CCDC87 Antibody Titration:
0.2-1 ug/ml; ELISA Titer: 1:1562500; Positive
Control: MCF7 cell lysate