

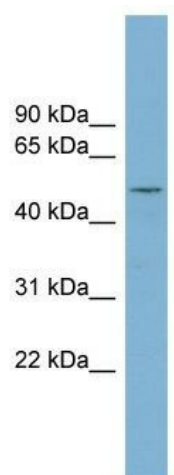
Product datasheet for TA344900

RNPEPL1 Rabbit Polyclonal Antibody

Product data:

Product Type:	Primary Antibodies
Applications:	WB
Recommended Dilution:	WB
Reactivity:	Human
Host:	Rabbit
Isotype:	IgG
Clonality:	Polyclonal
Immunogen:	The immunogen for anti-RNPEPL1 antibody: synthetic peptide directed towards the N terminal of human RNPEPL1. Synthetic peptide located within the following region: LKPADIGPRSRVWAEPCLLPATSKLSGAVEQWLSAAERLYGPYMWGRYD
Formulation:	Liquid. Purified antibody supplied in 1x PBS buffer with 0.09% (w/v) sodium azide and 2% sucrose.
Purification:	Affinity Purified
Conjugation:	Unconjugated
Storage:	Store at -20°C as received.
Stability:	Stable for 12 months from date of receipt.
Predicted Protein Size:	55 kDa
Gene Name:	arginyl aminopeptidase (aminopeptidase B)-like 1
Database Link:	NP_060696 Entrez Gene 57140 Human Q9HAU8
Background:	The function of this protein remains unknown.
Synonyms:	FLJ10806; FLJ26675; MGC99544
Note:	Immunogen Sequence Homology: Pig: 100%; Rat: 100%; Human: 100%; Mouse: 100%; Bovine: 100%; Dog: 93%; Guinea pig: 93%
Protein Families:	Druggable Genome


[View online »](#)

Product images:


WB Suggested Anti-RNPEPL1 Antibody Titration:
0.2-1 ug/ml; Positive Control: THP-1 cell lysate