

Product datasheet for **TA344898**

CNDP2 Rabbit Polyclonal Antibody

Product data:

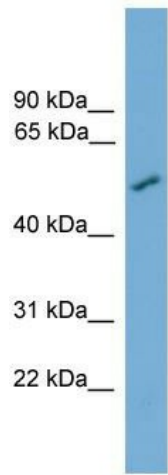
Product Type:	Primary Antibodies
Applications:	WB
Recommended Dilution:	WB
Reactivity:	Human
Host:	Rabbit
Isotype:	IgG
Clonality:	Polyclonal
Immunogen:	The immunogen for anti-CNDP2 antibody: synthetic peptide directed towards the middle region of human CNDP2. Synthetic peptide located within the following region: LAGRRAMKTVFGVEPDLTREGGSIPVTLTFQEATGKNVMLLPVGSADDGA
Formulation:	Liquid. Purified antibody supplied in 1x PBS buffer with 0.09% (w/v) sodium azide and 2% sucrose. <i>Note that this product is shipped as lyophilized powder to China customers.</i>
Purification:	Affinity Purified
Conjugation:	Unconjugated
Storage:	Store at -20°C as received.
Stability:	Stable for 12 months from date of receipt.
Predicted Protein Size:	53 kDa
Gene Name:	CNDP dipeptidase 2 (metallopeptidase M20 family)
Database Link:	NP_060705 Entrez Gene 55748 Human Q96KP4
Background:	CNDP2, also known as tissue carnosinase and peptidase A (EC 3.4.13.18), is a nonspecific dipeptidase rather than a selective carnosinase (Teufel et al., 2003 [PubMed 12473676]).
Synonyms:	CN2; CPGL; HEL-S-13; HsT2298; PEPA
Note:	Immunogen Sequence Homology: Dog: 100%; Pig: 100%; Rat: 100%; Horse: 100%; Human: 100%; Mouse: 100%; Yeast: 100%; Bovine: 100%; Rabbit: 100%; Zebrafish: 100%; Guinea pig: 100%



[View online »](#)

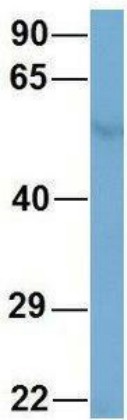
Protein Families: Protease

Product images:



WB Suggested Anti-CNDP2 Antibody Titration:
0.2-1 ug/ml; ELISA Titer: 1:1562500; Positive
Control: Jurkat cell lysate

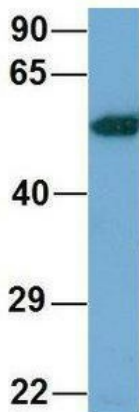
CNDP2



Rabbit Anti-CNDP2
Sample Type: Human Fetal
Heart
Antibody Concentration: 1ug/mL

Host: Rabbit; Target Name: CNDP2; Sample
Tissue: Human Fetal Heart; Antibody Dilution: 1.0
ug/ml

CNDP2



Rabbit Anti-CNDP2
Sample Type: Human Fetal Lung
Antibody Concentration: 1ug/mL

Host: Rabbit; Target Name: CNDP2; Sample
Tissue: Human Fetal Lung; Antibody Dilution: 1.0
ug/ml