

Product datasheet for **TA344894**

Septin 11 (SEPT11) Rabbit Polyclonal Antibody

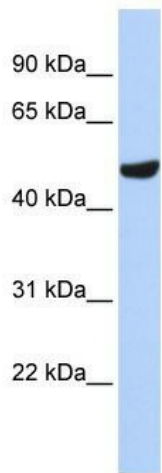
Product data:

Product Type:	Primary Antibodies
Applications:	IHC, WB
Recommended Dilution:	WB, IHC
Reactivity:	Human, Mouse
Host:	Rabbit
Isotype:	IgG
Clonality:	Polyclonal
Immunogen:	The immunogen for anti-SEPT11(septin 11) antibody: synthetic peptide directed towards the N terminal of human SEPT11(septin 11). Synthetic peptide located within the following region: MAVAVGRPSNEELRNLSLSGHVGFDSLDPQLVKNKSTSQGFCFNILCVGET
Formulation:	Liquid. Purified antibody supplied in 1x PBS buffer with 0.09% (w/v) sodium azide and 2% sucrose. <i>Note that this product is shipped as lyophilized powder to China customers.</i>
Purification:	Affinity Purified
Conjugation:	Unconjugated
Storage:	Store at -20°C as received.
Stability:	Stable for 12 months from date of receipt.
Predicted Protein Size:	49 kDa
Gene Name:	septin 11
Database Link:	NP_060713 Entrez Gene 52398 Mouse Entrez Gene 55752 Human Q9NVA2
Background:	SEPT11 belongs to the conserved septin family of filament-forming cytoskeletal GTPases that are involved in a variety of cellular functions including cytokinesis and vesicle trafficking.
Synonyms:	FLJ10849
Note:	Immunogen Sequence Homology: Pig: 100%; Rat: 100%; Horse: 100%; Human: 100%; Mouse: 100%; Bovine: 100%; Rabbit: 100%; Guinea pig: 100%



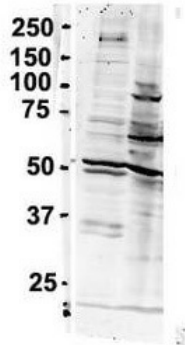
[View online »](#)

Product images:

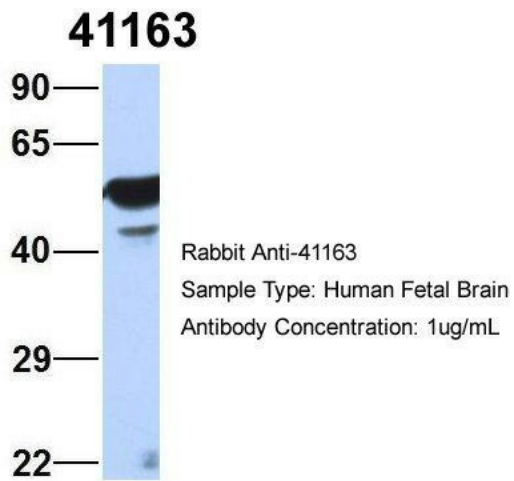


WB Suggested Anti-SEPT11 (septin 11) Antibody
 Titration: 0.2-1 ug/ml; ELISA Titer: 1:1562500;
 Positive Control: MCF7 cell lysate

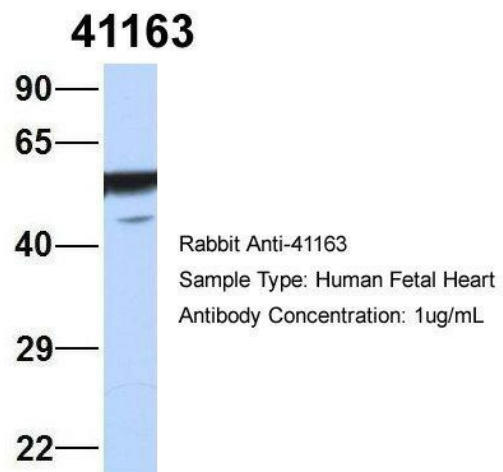
SEPT11
1 2



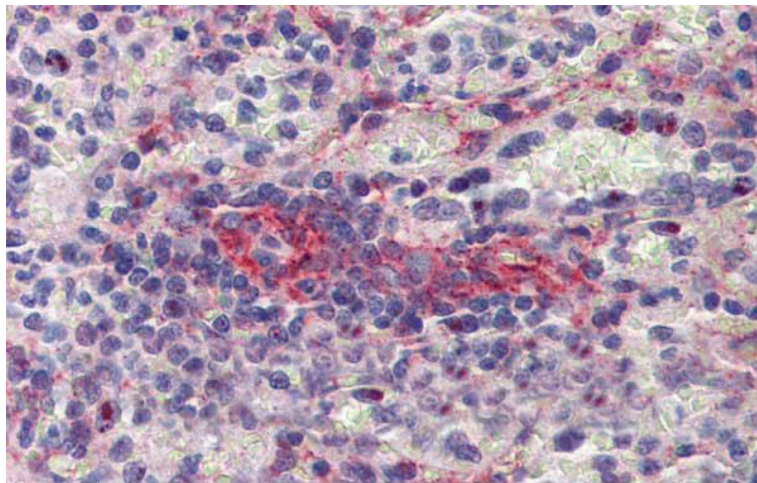
Sample Type: 1. Human NT-2 cells (60ug); 2. mouse brain extracts (80ug); Primary Antibody Dilution: 2 ug/ml; Secondary Antibody: IRDye 800CW goat anti-rabbit from Li-COR Bioscience; Secondary Antibody Dilution: 1: 20,000; Image Submitted by: Yuzhi Chen; U



Host: Rabbit; Target Name: 41163; Sample
Tissue: Human Fetal Brain; Antibody Dilution: 1.0
ug/ml



Host: Rabbit; Target Name: 41163; Sample
Tissue: Human Fetal Heart; Antibody Dilution: 1.0
ug/ml



Immunohistochemistry with Human Spleen
lysate tissue at an antibody concentration of 5.0
ug/ml using anti-SEPT11 (septin 11) antibody