

Product datasheet for **TA344891**

STATIP1 (ELP2) Rabbit Polyclonal Antibody

Product data:

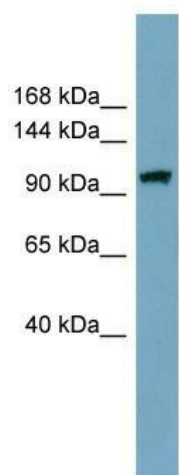
Product Type:	Primary Antibodies
Applications:	WB
Recommended Dilution:	WB
Reactivity:	Human
Host:	Rabbit
Isotype:	IgG
Clonality:	Polyclonal
Immunogen:	The immunogen for anti-ELP2 antibody: synthetic peptide directed towards the middle region of human ELP2. Synthetic peptide located within the following region: EESGVWLEQVRVGEVGGNTLGFYDCQFNEDGSMIIAHAFHGALHLWKQNT
Formulation:	Liquid. Purified antibody supplied in 1x PBS buffer with 0.09% (w/v) sodium azide and 2% sucrose. <i>Note that this product is shipped as lyophilized powder to China customers.</i>
Purification:	Affinity Purified
Conjugation:	Unconjugated
Storage:	Store at -20°C as received.
Stability:	Stable for 12 months from date of receipt.
Predicted Protein Size:	92 kDa
Gene Name:	elongator acetyltransferase complex subunit 2
Database Link:	NP_060725 Entrez Gene 55250 Human Q6IA86
Background:	ELP2 regulates the ligand-dependent activation of STAT3. ELP2 acts as subunit of the RNA polymerase II elongator complex, which is a histone acetyltransferase component of the RNA polymerase II (Pol II) holoenzyme and is involved in transcriptional elongation. Elongator may play a role in chromatin remodeling and is involved in acetylation of histones H3 and probably H4.
Synonyms:	SHINC-2; STATIP1; StIP



[View online »](#)

Note: Immunogen Sequence Homology: Dog: 100%; Pig: 100%; Rat: 100%; Horse: 100%; Human: 100%; Mouse: 100%; Bovine: 100%; Rabbit: 100%; Guinea pig: 100%; Zebrafish: 92%

Product images:



WB Suggested Anti-ELP2 Antibody Titration: 0.2-1 ug/ml; Positive Control: THP-1 cell lysate