

## Product datasheet for **TA344890**

### TTC17 Rabbit Polyclonal Antibody

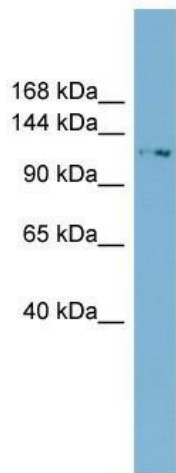
#### Product data:

Product Type:	Primary Antibodies
Applications:	WB
Recommended Dilution:	WB
Reactivity:	Human
Host:	Rabbit
Isotype:	IgG
Clonality:	Polyclonal
Immunogen:	The immunogen for anti-TTC17 antibody: synthetic peptide directed towards the N terminal of human TTC17. Synthetic peptide located within the following region: HNKEDPDCIKAKVPLGLDLDLYDGTITLESKDISPEDYIDTESPVPPDPE
Formulation:	Liquid. Purified antibody supplied in 1x PBS buffer with 0.09% (w/v) sodium azide and 2% sucrose. <i>Note that this product is shipped as lyophilized powder to China customers.</i>
Purification:	Affinity Purified
Conjugation:	Unconjugated
Storage:	Store at -20°C as received.
Stability:	Stable for 12 months from date of receipt.
Predicted Protein Size:	129 kDa
Gene Name:	tetratricopeptide repeat domain 17
Database Link:	<a href="#">NP_060729</a> <a href="#">Entrez Gene 55761 Human</a> <a href="#">Q96AE7</a>
Background:	The function of this protein remains unknown.
Synonyms:	DKFZp686D20222; FLJ10890; FLJ13099; FLJ23673
Note:	Immunogen Sequence Homology: Dog: 100%; Pig: 100%; Horse: 100%; Human: 100%; Bovine: 100%; Rabbit: 100%; Rat: 93%; Guinea pig: 93%; Mouse: 86%
Protein Families:	Protease



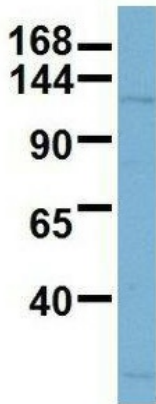
[View online »](#)

Product images:



WB Suggested Anti-TTC17 Antibody Titration: 0.2-1 ug/ml; Positive Control: HeLa cell lysate. TTC17 is supported by BioGPS gene expression data to be expressed in HeLa.

TTC17



Rabbit Anti-TTC17  
 Sample Type: Human 721\_B  
 Antibody Concentration: 1ug/mL

Host: Rabbit; Target Name: TTC17; Sample Tissue: Human 721\_B; Antibody Dilution: 1.0 ug/ml; TTC17 is supported by BioGPS gene expression data to be expressed in 721\_B.