

## Product datasheet for **TA344889**

### ASXL2 Rabbit Polyclonal Antibody

#### Product data:

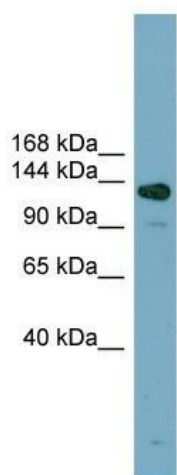
Product Type:	Primary Antibodies
Applications:	WB
Recommended Dilution:	WB
Reactivity:	Human
Host:	Rabbit
Isotype:	IgG
Clonality:	Polyclonal
Immunogen:	The immunogen for anti-ASXL2 antibody: synthetic peptide directed towards the middle region of human ASXL2. Synthetic peptide located within the following region: EEAPVSWEKRPVRTENRQHQQPFQVSPQPFLNRGDRIQVRKVPPLKIPVS
Formulation:	Liquid. Purified antibody supplied in 1x PBS buffer with 0.09% (w/v) sodium azide and 2% sucrose. <i>Note that this product is shipped as lyophilized powder to China customers.</i>
Purification:	Affinity Purified
Conjugation:	Unconjugated
Storage:	Store at -20°C as received.
Stability:	Stable for 12 months from date of receipt.
Predicted Protein Size:	154 kDa
Gene Name:	additional sex combs like 2, transcriptional regulator
Database Link:	<a href="#">NP_060733</a> <a href="#">Entrez Gene 55252 Human</a> <a href="#">Q76L83</a>
Background:	ASXL2 is a human homolog of the Drosophila asx gene. Drosophila asx is an enhancer of trithorax (see MIM 159555) and polycomb (see MIM 610231) (ETP) gene that encodes a chromatin protein with dual functions in transcriptional activation and silencing (Katoh and Katoh, 2003 [PubMed 12888926]).
Synonyms:	ASXH2



[View online »](#)

**Note:** Immunogen Sequence Homology: Dog: 100%; Pig: 100%; Human: 100%; Mouse: 100%; Rabbit: 100%; Rat: 93%; Horse: 93%; Bovine: 93%; Guinea pig: 93%

### Product images:



WB Suggested Anti-ASXL2 Antibody Titration: 0.2-1 ug/ml; Positive Control: NCI-H226 cell lysate ASXL2 is supported by BioGPS gene expression data to be expressed in NCIH226