

Product datasheet for **TA344888**

THNSL2 Rabbit Polyclonal Antibody

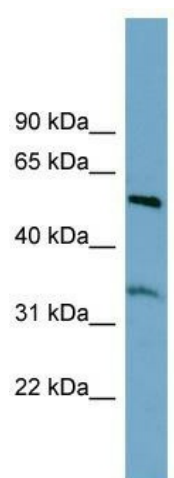
Product data:

Product Type:	Primary Antibodies
Applications:	WB
Recommended Dilution:	WB
Reactivity:	Human
Host:	Rabbit
Isotype:	IgG
Clonality:	Polyclonal
Immunogen:	The immunogen for anti-THNSL2 antibody: synthetic peptide directed towards the middle region of human THNSL2. Synthetic peptide located within the following region: LPLVEVVPTGAAGNLAAGYIAQKIGLPIRLVAVNRNDIIHRTVQQGDF
Formulation:	Liquid. Purified antibody supplied in 1x PBS buffer with 0.09% (w/v) sodium azide and 2% sucrose. <i>Note that this product is shipped as lyophilized powder to China customers.</i>
Purification:	Affinity Purified
Conjugation:	Unconjugated
Storage:	Store at -20°C as received.
Stability:	Stable for 12 months from date of receipt.
Predicted Protein Size:	54 kDa
Gene Name:	threonine synthase like 2
Database Link:	NP_060741 Entrez Gene 55258 Human Q86YJ6
Background:	THNSL2 acts as a catabolic phospho-lyase on both gamma- and beta-phosphorylated substrates. THNSL2 dDegrades O-phospho-threonine (PThr) to alpha-ketobutyrate, ammonia and phosphate.
Synonyms:	SOFAT; THS2; TSH2
Note:	Immunogen Sequence Homology: Rat: 100%; Horse: 100%; Human: 100%; Mouse: 100%; Pig: 93%; Bovine: 93%; Rabbit: 93%; Dog: 92%; Guinea pig: 92%; Zebrafish: 80%



[View online »](#)

Product images:



WB Suggested Anti-THNSL2 Antibody Titration:
0.2-1 ug/ml; Positive Control: HT1080 cell lysate