

Product datasheet for **TA344887**

TRAPPC14 Rabbit Polyclonal Antibody

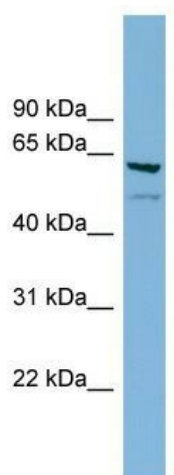
Product data:

Product Type:	Primary Antibodies
Applications:	WB
Recommended Dilution:	WB
Reactivity:	Human
Host:	Rabbit
Isotype:	IgG
Clonality:	Polyclonal
Immunogen:	The immunogen for anti-C7orf43 antibody: synthetic peptide directed towards the middle region of human C7orf43. Synthetic peptide located within the following region: DLVERHQASLGRSQSFHQPSRSHLMRSGSVMERRAITPPVASPVGRPL
Formulation:	Liquid. Purified antibody supplied in 1x PBS buffer with 0.09% (w/v) sodium azide and 2% sucrose. <i>Note that this product is shipped as lyophilized powder to China customers.</i>
Purification:	Affinity Purified
Conjugation:	Unconjugated
Storage:	Store at -20°C as received.
Stability:	Stable for 12 months from date of receipt.
Predicted Protein Size:	62 kDa
Gene Name:	chromosome 7 open reading frame 43
Database Link:	NP_060745 Entrez Gene 55262 Human Q8WVR3
Background:	The function of this protein remains unknown.
Synonyms:	DKFZp761G0712; FLJ10925
Note:	Immunogen Sequence Homology: Dog: 100%; Pig: 100%; Rat: 100%; Human: 100%; Mouse: 100%; Bovine: 100%; Rabbit: 100%; Zebrafish: 100%; Guinea pig: 100%



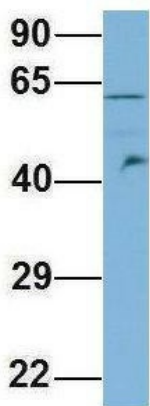
[View online »](#)

Product images:



WB Suggested Anti-C7orf43 Antibody Titration:
0.2-1 ug/ml; ELISA Titer: 1:312500; Positive
Control: Hela cell lysate

C7orf43



Rabbit Anti-C7orf43
Sample Type: Human Fetal Brain
Antibody Concentration: 1ug/mL

Host: Rabbit; Target Name: C7orf43; Sample
Tissue: Human Fetal Brain; Antibody Dilution: 1.0
ug/ml

C7orf43



Rabbit Anti-C7orf43
Sample Type: Human HepG2
Antibody Concentration: 1ug/mL

Host: Rabbit; Target Name: C7orf43; Sample Tissue: HepG2; Antibody Dilution: 1.0 ug/ml; C7orf43 is supported by BioGPS gene expression data to be expressed in HepG2