

## Product datasheet for **TA344884**

### UEVLD Rabbit Polyclonal Antibody

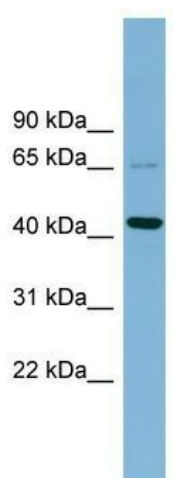
#### Product data:

Product Type:	Primary Antibodies
Applications:	WB
Recommended Dilution:	WB
Reactivity:	Human
Host:	Rabbit
Isotype:	IgG
Clonality:	Polyclonal
Immunogen:	The immunogen for anti-UEVLD antibody: synthetic peptide directed towards the middle region of human UEVLD. Synthetic peptide located within the following region: SLSSSDEARQVDLLAYIAKITEGVSDTNSKSWANHENTVKNKITVVGGE
Formulation:	Liquid. Purified antibody supplied in 1x PBS buffer with 0.09% (w/v) sodium azide and 2% sucrose. <i>Note that this product is shipped as lyophilized powder to China customers.</i>
Purification:	Affinity Purified
Conjugation:	Unconjugated
Storage:	Store at -20°C as received.
Stability:	Stable for 12 months from date of receipt.
Predicted Protein Size:	42 kDa
Gene Name:	UEV and lactate/malate dehydrogenase domains
Database Link:	<a href="#">NP_060784</a> <a href="#">Entrez Gene 55293 Human</a> <a href="#">Q8IX04</a>
Background:	UEVLD is a possible negative regulator of polyubiquitination.
Synonyms:	ATTP; UEV3
Note:	Immunogen Sequence Homology: Human: 100%; Rat: 93%; Rabbit: 93%; Pig: 92%; Horse: 92%; Bovine: 92%; Mouse: 91%; Guinea pig: 86%; Dog: 85%



[View online »](#)

## Product images:



WB Suggested Anti-UEVLD Antibody Titration: 0.2-1 ug/ml; ELISA Titer: 1:62500; Positive Control: 721\_B cell lysate. UEVLD is supported by BioGPS gene expression data to be expressed in 721\_B