

Product datasheet for **TA344883**

TBC1D19 Rabbit Polyclonal Antibody

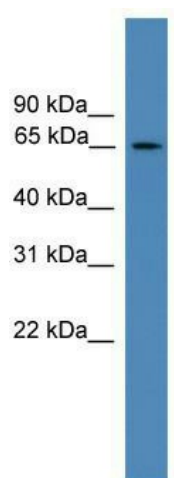
Product data:

Product Type:	Primary Antibodies
Applications:	WB
Recommended Dilution:	WB
Reactivity:	Human
Host:	Rabbit
Isotype:	IgG
Clonality:	Polyclonal
Immunogen:	The immunogen for anti-TBC1D19 antibody: synthetic peptide directed towards the middle region of human TBC1D19. Synthetic peptide located within the following region: PVYAPKDFLEVLINLRNPNYENGDSLFRTHLGLIQVPLKVKDIPELKEC
Formulation:	Liquid. Purified antibody supplied in 1x PBS buffer with 0.09% (w/v) sodium azide and 2% sucrose. <i>Note that this product is shipped as lyophilized powder to China customers.</i>
Purification:	Affinity Purified
Conjugation:	Unconjugated
Storage:	Store at -20°C as received.
Stability:	Stable for 12 months from date of receipt.
Predicted Protein Size:	60 kDa
Gene Name:	TBC1 domain family member 19
Database Link:	NP_060787 Entrez Gene 55296 Human Q8N5T2
Background:	TBC1D19 may act as a GTPase-activating protein for Rab family protein(s).
Synonyms:	FLJ11082
Note:	Immunogen Sequence Homology: Dog: 100%; Pig: 100%; Rat: 100%; Horse: 100%; Human: 100%; Mouse: 100%; Guinea pig: 100%; Bovine: 93%; Rabbit: 93%



[View online »](#)

Product images:



WB Suggested Anti-TBC1D19 Antibody Titration:
0.2-1 ug/ml; ELISA Titer: 1:312500; Positive
Control: HT1080 cell lysate