

Product datasheet for **TA344878**

PI 4 Kinase type 2 beta (PI4K2B) Rabbit Polyclonal Antibody

Product data:

Product Type:	Primary Antibodies
Applications:	WB
Recommended Dilution:	WB
Reactivity:	Mouse
Host:	Rabbit
Isotype:	IgG
Clonality:	Polyclonal
Immunogen:	The immunogen for anti-Pi4k2b antibody: synthetic peptide corresponding to a region of Mouse. Synthetic peptide located within the following region: EDPEFADIVLKAEQAI EIGVFPERISQGSSGSYFVKDSKRNIIGVFKPKS
Formulation:	Liquid. Purified antibody supplied in 1x PBS buffer with 0.09% (w/v) sodium azide and 2% sucrose.
Purification:	Affinity Purified
Conjugation:	Unconjugated
Storage:	Store at -20°C as received.
Stability:	Stable for 12 months from date of receipt.
Predicted Protein Size:	52 kDa
Gene Name:	phosphatidylinositol 4-kinase type 2 beta
Database Link:	NP_060793 Entrez Gene 55300 Human Q8TCG2
Background:	Together with PI4K2A and the type III PI4Ks (PIK4CA and PIK4CB) Pi4k2b contributes to the overall PI4-kinase activity of the cell. This contribution may be especially significant in plasma membrane, endosomal and Golgi compartments. The phosphorylation of phosphatidylinositol (PI) to PI4P is the first committed step in the generation of phosphatidylinositol 4,5-bisphosphate (PIP2), a precursor of the second messenger inositol 1,4,5-trisphosphate (InsP3). Pi4k2b contributes to the production of InsP3 in stimulated cells and is likely to be involved in the regulation of vesicular trafficking.



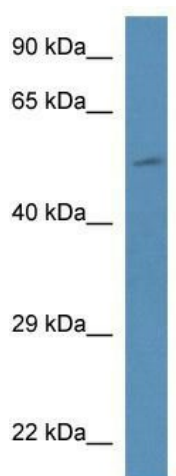
[View online »](#)

Synonyms: PI4KIIB; PIK42B

Note: Immunogen Sequence Homology: Dog: 100%; Pig: 100%; Rat: 100%; Horse: 100%; Human: 100%; Mouse: 100%; Yeast: 100%; Rabbit: 100%; Zebrafish: 100%; Guinea pig: 100%; Bovine: 93%

Protein Families: Druggable Genome

Product images:



WB Suggested Anti-Pi4k2b Antibody; Titration: 1.0 ug/ml; Positive Control: Mouse Liver