

## Product datasheet for **TA344877**

### PI 4 Kinase type 2 beta (PI4K2B) Rabbit Polyclonal Antibody

#### Product data:

|                         |   |
|-------------------------|---|
| Product Type:           | Primary Antibodies  |
| Applications:           | WB  |
| Recommended Dilution:   | WB  |
| Reactivity:             | Human   |
| Host:                   | Rabbit  |
| Isotype:                | IgG   |
| Clonality:              | Polyclonal  |
| Immunogen:              | The immunogen for anti-PI4K2B antibody: synthetic peptide directed towards the middle region of human PI4K2B. Synthetic peptide located within the following region:<br>IIGVFKPKSEEPYGQLNPKWTKYVHKVCCPCCFGRGCLIPNQGYLSEAGA                                      |
| Formulation:            | Liquid. Purified antibody supplied in 1x PBS buffer with 0.09% (w/v) sodium azide and 2% sucrose.<br><i>Note that this product is shipped as lyophilized powder to China customers.</i>   |
| Purification:           | Affinity Purified   |
| Conjugation:            | Unconjugated  |
| Storage:                | Store at -20°C as received.   |
| Stability:              | Stable for 12 months from date of receipt.  |
| Predicted Protein Size: | 55 kDa  |
| Gene Name:              | phosphatidylinositol 4-kinase type 2 beta   |
| Database Link:          | <a href="#">NP_060793</a><br><a href="#">Entrez Gene 55300 Human</a><br><a href="#">Q8TCG2</a>  |
| Background:             | Phosphatidylinositol 4-kinases (PI4Ks) phosphorylate phosphatidylinositol to generate phosphatidylinositol 4-phosphate (PIP), an immediate precursor of several important signaling and scaffolding molecules. PIP itself may also have direct functional and s |
| Synonyms:               | PI4KIIB; PIK42B   |

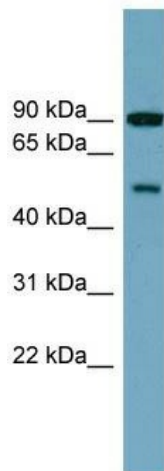


[View online »](#)

**Note:** Immunogen Sequence Homology: Pig: 100%; Rat: 100%; Horse: 100%; Human: 100%; Mouse: 100%; Rabbit: 100%; Guinea pig: 100%; Goat: 93%; Bovine: 93%; Zebrafish: 93%; Dog: 86%; Yeast: 86%

**Protein Families:** Druggable Genome

**Product images:**



WB Suggested Anti-PI4K2B Antibody Titration:  
0.2-1 ug/ml; Positive Control: 721\_B cell lysate