

Product datasheet for **TA344875**

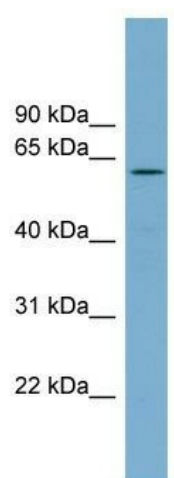
RIOK2 Rabbit Polyclonal Antibody

Product data:

Product Type:	Primary Antibodies
Applications:	WB
Recommended Dilution:	WB
Reactivity:	Human
Host:	Rabbit
Isotype:	IgG
Clonality:	Polyclonal
Immunogen:	The immunogen for anti-RIOK2 antibody: synthetic peptide directed towards the middle region of human RIOK2. Synthetic peptide located within the following region: IDYNRHAVVMELINGYPLCQIHVVDPASVYDEAMELVKLANHGLIHGD
Formulation:	Liquid. Purified antibody supplied in 1x PBS buffer with 0.09% (w/v) sodium azide and 2% sucrose. <i>Note that this product is shipped as lyophilized powder to China customers.</i>
Purification:	Affinity Purified
Conjugation:	Unconjugated
Storage:	Store at -20°C as received.
Stability:	Stable for 12 months from date of receipt.
Predicted Protein Size:	63 kDa
Gene Name:	RIO kinase 2
Database Link:	NP_060813 Entrez Gene 55781 Human Q9BVS4
Background:	The function of this protein remains unknown.
Synonyms:	RIO2
Note:	Immunogen Sequence Homology: Dog: 100%; Pig: 100%; Rat: 100%; Horse: 100%; Human: 100%; Mouse: 100%; Bovine: 100%; Rabbit: 100%; Guinea pig: 100%
Protein Families:	Druggable Genome, Protein Kinase



[View online »](#)

Product images:


WB Suggested Anti-RIOK2 Antibody Titration: 0.2-1 ug/ml; ELISA Titer: 1:1562500; Positive Control: THP-1 cell lysate