

Product datasheet for **TA344874**

RSAD1 Rabbit Polyclonal Antibody

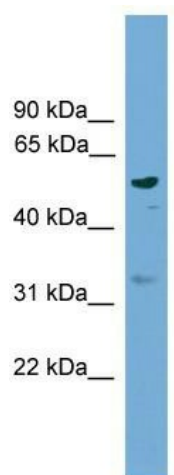
Product data:

Product Type:	Primary Antibodies
Applications:	WB
Recommended Dilution:	WB
Reactivity:	Human
Host:	Rabbit
Isotype:	IgG
Clonality:	Polyclonal
Immunogen:	The immunogen for anti-RSAD1 antibody: synthetic peptide directed towards the middle region of human RSAD1. Synthetic peptide located within the following region: NWTYWQCGQYLGVGPGAHGFRMPQGAGGHTREARIQTLEPDNWMKEVMLF
Formulation:	Liquid. Purified antibody supplied in 1x PBS buffer with 0.09% (w/v) sodium azide and 2% sucrose. <i>Note that this product is shipped as lyophilized powder to China customers.</i>
Purification:	Affinity Purified
Conjugation:	Unconjugated
Storage:	Store at -20°C as received.
Stability:	Stable for 12 months from date of receipt.
Predicted Protein Size:	49 kDa
Gene Name:	radical S-adenosyl methionine domain containing 1
Database Link:	NP_060816 Entrez Gene 55316 Human Q9HA92
Background:	RSAD1 may be involved in porphyrin cofactor biosynthesis.
Synonyms:	FLJ11164; FLJ20975
Note:	Immunogen Sequence Homology: Pig: 100%; Rat: 100%; Human: 100%; Mouse: 100%; Bovine: 100%; Rabbit: 100%; Guinea pig: 100%; Horse: 93%; Zebrafish: 91%



[View online »](#)

Product images:



WB Suggested Anti-RSAD1 Antibody Titration: 0.2-1 ug/ml; ELISA Titer: 1:1562500; Positive Control: 293T cell lysate. RSAD1 is supported by BioGPS gene expression data to be expressed in HEK293T.