

## Product datasheet for **TA344873**

### FTSJD1 (CMTR2) Rabbit Polyclonal Antibody

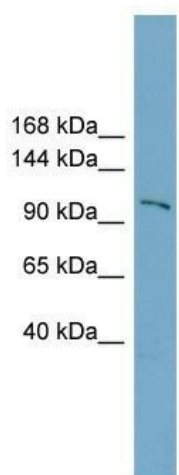
#### Product data:

Product Type:	Primary Antibodies
Applications:	WB
Recommended Dilution:	WB
Reactivity:	Human
Host:	Rabbit
Isotype:	IgG
Clonality:	Polyclonal
Immunogen:	The immunogen for anti-FTSJD1 antibody: synthetic peptide directed towards the middle region of human FTSJD1. Synthetic peptide located within the following region: LMYLLNCCFDQVHVFKPATSKAGNSEVYVWCLHYKGREAIHPLLSKMTLN
Formulation:	Liquid. Purified antibody supplied in 1x PBS buffer with 0.09% (w/v) sodium azide and 2% sucrose. <i>Note that this product is shipped as lyophilized powder to China customers.</i>
Purification:	Affinity Purified
Conjugation:	Unconjugated
Storage:	Store at -20°C as received.
Stability:	Stable for 12 months from date of receipt.
Predicted Protein Size:	88 kDa
Gene Name:	cap methyltransferase 2
Database Link:	<a href="#">NP_060818</a> <a href="#">Entrez Gene 55783 Human</a> <a href="#">Q8IYT2</a>
Background:	The function of this protein remains unknown.
Synonyms:	AFT; FTSJD1; HMTr2; MTr2
Note:	Immunogen Sequence Homology: Dog: 100%; Pig: 100%; Rat: 100%; Horse: 100%; Human: 100%; Mouse: 100%; Rabbit: 100%; Guinea pig: 100%; Bovine: 93%; Zebrafish: 77%



[View online »](#)

Product images:



WB Suggested Anti-FTSJD1 Antibody Titration:  
0.2-1 ug/ml; Positive Control: COLO205 cell lysate