

## Product datasheet for **TA344870**

### UFSP2 Rabbit Polyclonal Antibody

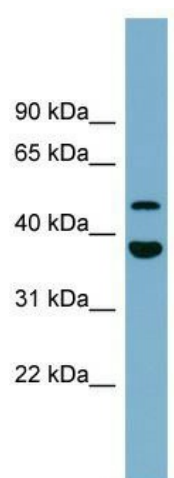
#### Product data:

Product Type:	Primary Antibodies
Applications:	WB
Recommended Dilution:	WB
Reactivity:	Human
Host:	Rabbit
Isotype:	IgG
Clonality:	Polyclonal
Immunogen:	The immunogen for anti-C4orf20 antibody: synthetic peptide directed towards the middle region of human C4orf20. Synthetic peptide located within the following region: TPVMIGGGVLAHTILGVAWNEITGQIKFLIDPHYTGAEDLQVILEKGWC
Formulation:	Liquid. Purified antibody supplied in 1x PBS buffer with 0.09% (w/v) sodium azide and 2% sucrose.
Purification:	Affinity Purified
Conjugation:	Unconjugated
Storage:	Store at -20°C as received.
Stability:	Stable for 12 months from date of receipt.
Predicted Protein Size:	53 kDa
Gene Name:	UFM1-specific peptidase 2
Database Link:	<a href="#">NP_060829</a> <a href="#">Entrez Gene 55325 Human</a> <a href="#">Q9NUQ7</a>
Background:	The function of this protein remains unknown.
Synonyms:	BHD; C4orf20
Note:	Immunogen Sequence Homology: Dog: 100%; Pig: 100%; Rat: 100%; Horse: 100%; Human: 100%; Mouse: 100%; Bovine: 100%; Rabbit: 100%; Guinea pig: 100%; Zebrafish: 86%; Goat: 83%



[View online »](#)

## Product images:



WB Suggested Anti-C4orf20 Antibody Titration:  
0.2-1 ug/ml; Positive Control: Human heart