

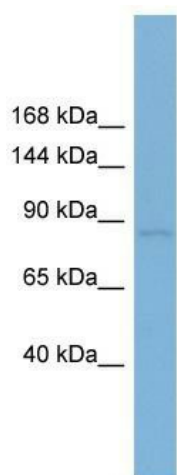
Product datasheet for TA344867

RSBN1 Rabbit Polyclonal Antibody

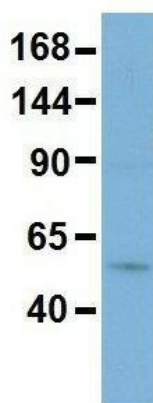
Product data:

Product Type:	Primary Antibodies
Applications:	WB
Recommended Dilution:	WB
Reactivity:	Human
Host:	Rabbit
Isotype:	IgG
Clonality:	Polyclonal
Immunogen:	The immunogen for anti-RSBN1 antibody: synthetic peptide directed towards the N terminal of human RSBN1. Synthetic peptide located within the following region: EGKEKPHAGVSPRGVKRQRRSSSGGSQEKGRPSQEPPLAPPHRRRSRQ
Formulation:	Liquid. Purified antibody supplied in 1x PBS buffer with 0.09% (w/v) sodium azide and 2% sucrose.
Purification:	Affinity Purified
Conjugation:	Unconjugated
Storage:	Store at -20°C as received.
Stability:	Stable for 12 months from date of receipt.
Predicted Protein Size:	90 kDa
Gene Name:	round spermatid basic protein 1
Database Link:	NP_060834 Entrez Gene 54665 Human Q5VWQ0
Background:	The function of this protein remains unknown.
Synonyms:	ROSBIN
Note:	Immunogen Sequence Homology: Dog: 100%; Pig: 100%; Rat: 100%; Human: 100%; Mouse: 100%; Bovine: 100%; Rabbit: 100%; Guinea pig: 100%


[View online »](#)

Product images:


WB Suggested Anti-RSBN1 Antibody Titration:
0.2-1 ug/ml; Positive Control: 721_B cell
lysate RSBN1 is supported by BioGPS gene
expression data to be expressed in 721_B

RSBN1


Rabbit Anti-RSBN1
Sample Type: Human MCF7
Antibody Concentration: 1ug/mL

Host: Rabbit; Target Name: RSBN1; Sample
Tissue: Human MCF7; Antibody Dilution: 1.0
ug/ml; RSBN1 is supported by BioGPS gene
expression data to be expressed in MCF7