

Product datasheet for **TA344866**

MNS1 Rabbit Polyclonal Antibody

Product data:

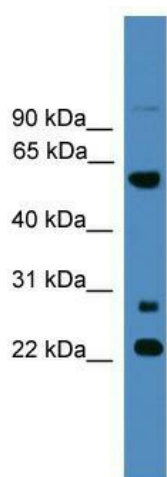
Product Type:	Primary Antibodies
Applications:	WB
Recommended Dilution:	WB
Reactivity:	Human
Host:	Rabbit
Isotype:	IgG
Clonality:	Polyclonal
Immunogen:	The immunogen for anti-MNS1 antibody: synthetic peptide directed towards the N terminal of human MNS1. Synthetic peptide located within the following region: EKLAMELAKLKHESLKDEKMRQVRENSIELRELEKCLKAAYMNKERAAQ
Formulation:	Liquid. Purified antibody supplied in 1x PBS buffer with 0.09% (w/v) sodium azide and 2% sucrose. <i>Note that this product is shipped as lyophilized powder to China customers.</i>
Purification:	Affinity Purified
Conjugation:	Unconjugated
Storage:	Store at -20°C as received.
Stability:	Stable for 12 months from date of receipt.
Predicted Protein Size:	60 kDa
Gene Name:	meiosis specific nuclear structural 1
Database Link:	NP_060835 Entrez Gene 55329 Human Q8NEH6
Background:	This gene encodes a protein highly similar to the mouse meiosis-specific nuclear structural 1 protein. The mouse protein was shown to be expressed at the pachytene stage during spermatogenesis and may function as a nuclear skeletal protein to regulate nuclear morphology during meiosis.
Synonyms:	SPATA40



[View online »](#)

Note: Immunogen Sequence Homology: Dog: 100%; Pig: 100%; Rat: 100%; Horse: 100%; Human: 100%; Mouse: 100%; Rabbit: 100%; Guinea pig: 100%; Bovine: 93%; Zebrafish: 75%

Product images:



WB Suggested Anti-MNS1 Antibody Titration: 0.2-1 ug/ml; ELISA Titer: 1:1562500; Positive Control: 721_B cell lysate