

## Product datasheet for **TA344865**

### NHSL1 Rabbit Polyclonal Antibody

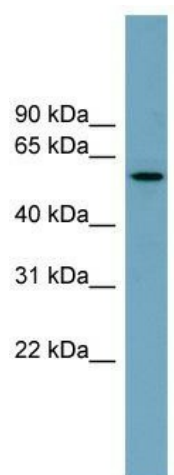
#### Product data:

Product Type:	Primary Antibodies
Applications:	WB
Recommended Dilution:	WB
Reactivity:	Human
Host:	Rabbit
Isotype:	IgG
Clonality:	Polyclonal
Immunogen:	The immunogen for anti-MNS1 antibody: synthetic peptide directed towards the middle region of human MNS1. Synthetic peptide located within the following region: KVQENEKRLQLQNALTQKLEEMLRQREDLEQVRQELYQEEQAEIYKSKL
Formulation:	Liquid. Purified antibody supplied in 1x PBS buffer with 0.09% (w/v) sodium azide and 2% sucrose.
Purification:	Affinity Purified
Conjugation:	Unconjugated
Storage:	Store at -20°C as received.
Stability:	Stable for 12 months from date of receipt.
Predicted Protein Size:	60 kDa
Gene Name:	NHS like 1
Database Link:	<a href="#">NP_065197</a> <a href="#">Entrez Gene 57224 Human</a> <a href="#">Q5SYE7</a>
Background:	This gene encodes a protein highly similar to the mouse meiosis-specific nuclear structural 1 protein. The mouse protein was shown to be expressed at the pachytene stage during spermatogenesis and may function as a nuclear skeletal protein to regulate nuc
Synonyms:	C6orf63
Note:	Immunogen Sequence Homology: Dog: 100%; Horse: 100%; Human: 100%; Mouse: 100%; Bovine: 100%; Rabbit: 100%; Pig: 93%; Rat: 93%; Guinea pig: 92%



[View online »](#)

## Product images:



WB Suggested Anti-MNS1 Antibody Titration: 0.2-1 ug/ml; Positive Control: Hela cell lysate