

Product datasheet for **TA344864**

PCID2 Rabbit Polyclonal Antibody

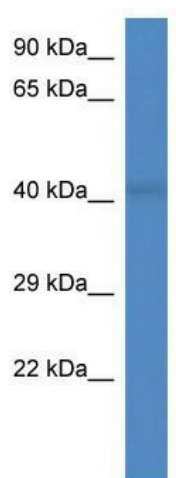
Product data:

Product Type:	Primary Antibodies
Applications:	WB
Recommended Dilution:	WB
Reactivity:	Rat
Host:	Rabbit
Isotype:	IgG
Clonality:	Polyclonal
Immunogen:	The immunogen for anti-RGD1307041 antibody: synthetic peptide corresponding to a region of Rat. Synthetic peptide located within the following region: MLFLVNQLFKIYFKINKLHLCKPLIRAIDSSNLKDDYSTAQRVTYKYYVG
Formulation:	Liquid. Purified antibody supplied in 1x PBS buffer with 0.09% (w/v) sodium azide and 2% sucrose. <i>Note that this product is shipped as lyophilized powder to China customers.</i>
Purification:	Affinity Purified
Conjugation:	Unconjugated
Storage:	Store at -20°C as received.
Stability:	Stable for 12 months from date of receipt.
Predicted Protein Size:	42 kDa
Gene Name:	PCI domain containing 2
Database Link:	NP_060856 Entrez Gene 55795 Human Q5JVF3
Background:	The function remains unknown.
Synonyms:	F10
Note:	Immunogen Sequence Homology: Dog: 100%; Pig: 100%; Rat: 100%; Human: 100%; Mouse: 100%; Bovine: 100%; Rabbit: 100%; Guinea pig: 100%; Horse: 93%; Zebrafish: 79%



[View online »](#)

Product images:



WB Suggested Anti-RGD1307041 Antibody;
Titration: 1.0 ug/ml; Positive Control: Rat Heart