

Product datasheet for **TA344863**

TCP11L1 Rabbit Polyclonal Antibody

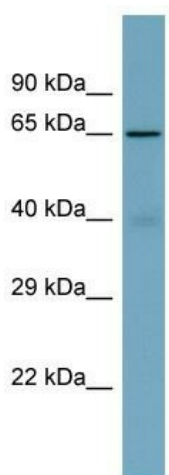
Product data:

Product Type:	Primary Antibodies
Applications:	WB
Recommended Dilution:	WB
Reactivity:	Human
Host:	Rabbit
Isotype:	IgG
Clonality:	Polyclonal
Immunogen:	The immunogen for Anti-TCP11L1 antibody is: synthetic peptide directed towards the C-terminal region of Human TCP11L1. Synthetic peptide located within the following region: GQIQAVASPDDPIRRIMESRILTFLETYLASGHQKPLPTVPGGLSPVQRE
Formulation:	Liquid. Purified antibody supplied in 1x PBS buffer with 0.09% (w/v) sodium azide and 2% sucrose. <i>Note that this product is shipped as lyophilized powder to China customers.</i>
Purification:	Affinity Purified
Conjugation:	Unconjugated
Storage:	Store at -20°C as received.
Stability:	Stable for 12 months from date of receipt.
Predicted Protein Size:	65 kDa
Gene Name:	t-complex 11 like 1
Database Link:	NP_060863 Entrez Gene 55346 Human Q9NUJ3
Background:	The function of this protein remains unknown.
Synonyms:	dj85M6.3
Note:	Immunogen Sequence Homology: Human: 100%; Mouse: 100%; Pig: 93%; Rat: 93%; Horse: 93%; Guinea pig: 93%; Rabbit: 92%; Dog: 79%



[View online »](#)

Product images:



Host: Rabbit

Target Name: TCP11L1

Sample Tissue: Fetal Brain Lysate

Antibody Dilution: 1.0 μ g/ml

Host: Rabbit; Target Name: TCP11L1; Sample Tissue: Fetal Brain lysates; Antibody Dilution: 1.0 ug/ml