

Product datasheet for **TA344862**

SPATA7 Rabbit Polyclonal Antibody

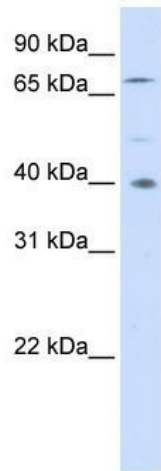
Product data:

Product Type:	Primary Antibodies
Applications:	WB
Recommended Dilution:	WB
Reactivity:	Human
Host:	Rabbit
Isotype:	IgG
Clonality:	Polyclonal
Immunogen:	The immunogen for anti-SPATA7 antibody: synthetic peptide directed towards the middle region of human SPATA7. Synthetic peptide located within the following region: FLSQYRYYPKAKRKKDFTDQRIEAETQTELSFKSELGTAETKNMTDSEMN
Formulation:	Liquid. Purified antibody supplied in 1x PBS buffer with 0.09% (w/v) sodium azide and 2% sucrose. <i>Note that this product is shipped as lyophilized powder to China customers.</i>
Purification:	Affinity Purified
Conjugation:	Unconjugated
Storage:	Store at -20°C as received.
Stability:	Stable for 12 months from date of receipt.
Predicted Protein Size:	68 kDa
Gene Name:	spermatogenesis associated 7
Database Link:	NP_060888 Entrez Gene 55812 Human Q9P0W8
Background:	The function of the SPATA7 protein remains unknown.
Synonyms:	HEL-S-296; HSD-3.1; HSD3; LCA3
Note:	Immunogen Sequence Homology: Pig: 100%; Horse: 100%; Human: 100%; Rat: 93%; Mouse: 93%; Bovine: 93%; Guinea pig: 92%; Dog: 86%; Zebrafish: 82%; Rabbit: 79%

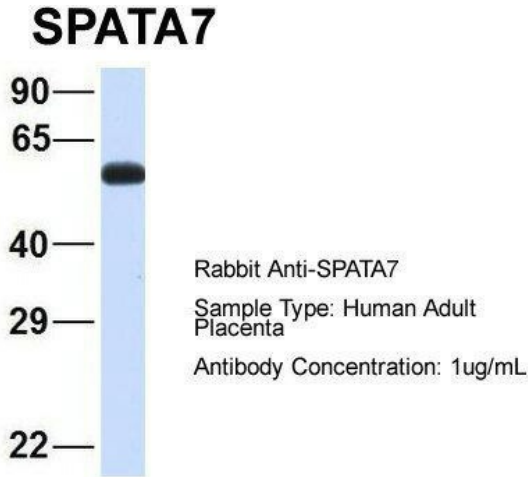


[View online »](#)

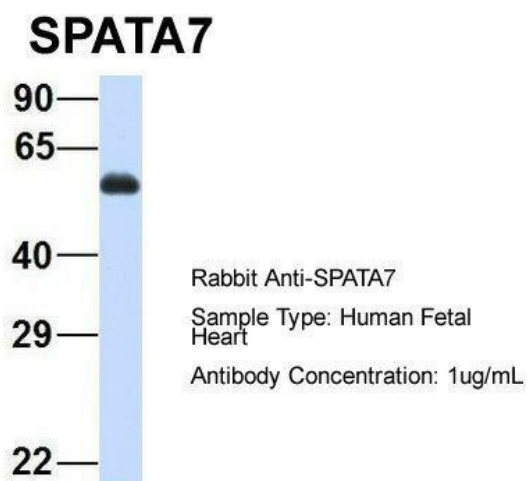
Product images:



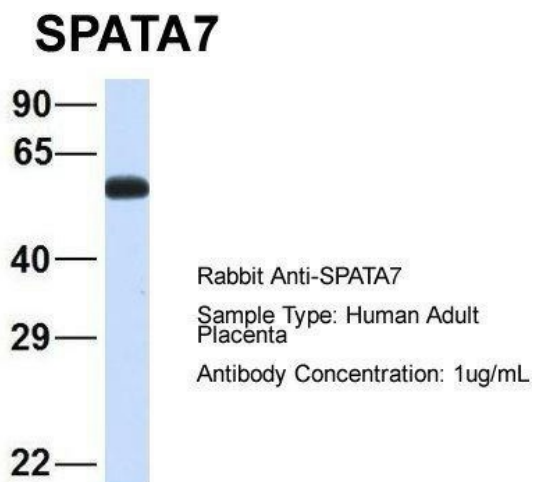
WB Suggested Anti-SPATA7 Antibody Titration:
0.2-1 ug/ml; ELISA Titer: 1:1562500; Positive
Control: 293T cell lysate



Host: Rabbit; Target Name: SPATA7; Sample
Tissue: Human Adult Placenta; Antibody Dilution:
1.0 ug/ml



Host: Rabbit; Target Name: SPATA7; Sample Tissue: Human Fetal Heart; Antibody Dilution: 1.0 ug/ml



Host: Rabbit; Target Name: SPATA7; Sample Tissue: Human Adult Placenta; Antibody Dilution: 1.0 ug/ml