

Product datasheet for **TA344857**

PRR13 Rabbit Polyclonal Antibody

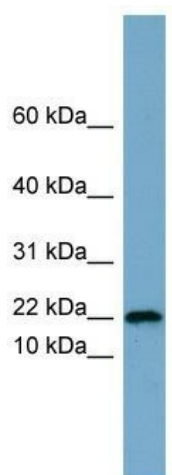
Product data:

Product Type:	Primary Antibodies
Applications:	WB
Recommended Dilution:	WB
Reactivity:	Human
Host:	Rabbit
Isotype:	IgG
Clonality:	Polyclonal
Immunogen:	The immunogen for anti-PRR13 antibody: synthetic peptide directed towards the middle region of human PRR13. Synthetic peptide located within the following region: PFPPGPCPPPPGAPHGNPAFPPGGPPHPVQPGYPGCQLGYPYPPYPPP
Formulation:	Liquid. Purified antibody supplied in 1x PBS buffer with 0.09% (w/v) sodium azide and 2% sucrose. <i>Note that this product is shipped as lyophilized powder to China customers.</i>
Purification:	Affinity Purified
Conjugation:	Unconjugated
Storage:	Store at -20°C as received.
Stability:	Stable for 12 months from date of receipt.
Predicted Protein Size:	15 kDa
Gene Name:	proline rich 13
Database Link:	NP_060927 Entrez Gene 54458 Human Q9NZ81
Background:	PRR13 negatively regulates TSP1 expression at the level of transcription. This down-regulation was shown to reduce taxane-induced apoptosis.
Synonyms:	TXR1
Note:	Immunogen Sequence Homology: Human: 100%; Dog: 92%; Pig: 92%; Bovine: 86%; Rabbit: 85%



[View online »](#)

Product images:



WB Suggested Anti-PRR13 Antibody Titration: 0.2-1 ug/ml; ELISA Titer: 1:62500; Positive Control: MCF7 cell lysate. PRR13 is supported by BioGPS gene expression data to be expressed in MCF7