

## Product datasheet for **TA344855**

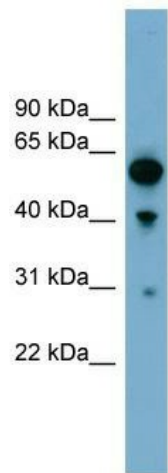
### ARHGAP15 Rabbit Polyclonal Antibody

#### Product data:

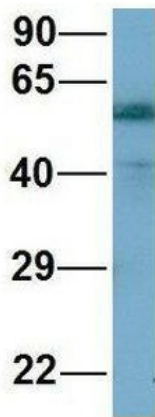
Product Type:	Primary Antibodies
Applications:	WB
Recommended Dilution:	WB
Reactivity:	Human
Host:	Rabbit
Isotype:	IgG
Clonality:	Polyclonal
Immunogen:	The immunogen for anti-ARHGAP15 antibody: synthetic peptide directed towards the middle region of human ARHGAP15. Synthetic peptide located within the following region: VKSRLKKFITRRPSLKLQEKGLIKDQIFGSHLHKVCERENSTVPWFVKQ
Formulation:	Liquid. Purified antibody supplied in 1x PBS buffer with 0.09% (w/v) sodium azide and 2% sucrose. <i>Note that this product is shipped as lyophilized powder to China customers.</i>
Purification:	Affinity Purified
Conjugation:	Unconjugated
Storage:	Store at -20°C as received.
Stability:	Stable for 12 months from date of receipt.
Predicted Protein Size:	54 kDa
Gene Name:	Rho GTPase activating protein 15
Database Link:	<a href="#">NP_060930</a> <a href="#">Entrez Gene 55843 Human</a> <a href="#">Q53QZ3</a>
Background:	RHO GTPases (see ARHA; MIM 165390) regulate diverse biologic processes, and their activity is regulated by RHO GTPase-activating proteins (GAPs), such as ARHGAP15 (Seoh et al., 2003 [PubMed 12650940]).
Synonyms:	BM046
Note:	Immunogen Sequence Homology: Dog: 100%; Pig: 100%; Rat: 100%; Horse: 100%; Human: 100%; Mouse: 100%; Bovine: 100%; Rabbit: 100%; Guinea pig: 100%; Zebrafish: 92%



[View online »](#)

**Product images:**

WB Suggested Anti-ARHGAP15 Antibody Titration:  
0.2-1 ug/ml; Positive Control: 293T cell lysate

**ARHGAP15**

Rabbit Anti-ARHGAP15  
Sample Type: Human Adult  
Placenta  
Antibody Concentration: 1ug/mL

Host: Rabbit; Target Name: ARHGAP15; Sample  
Tissue: Human Adult Placenta; Antibody Dilution:  
1.0 ug/ml