

Product datasheet for **TA344854**

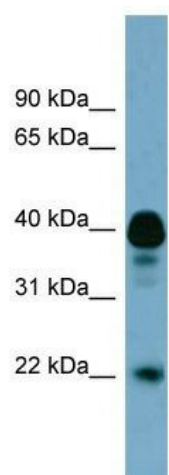
FAM45B (FAM45BP) Rabbit Polyclonal Antibody

Product data:

Product Type:	Primary Antibodies
Applications:	WB
Recommended Dilution:	WB
Reactivity:	Human
Host:	Rabbit
Isotype:	IgG
Clonality:	Polyclonal
Immunogen:	The immunogen for anti-FAM45B antibody: synthetic peptide directed towards the middle region of human FAM45B. Synthetic peptide located within the following region: FLSKDFDARKAYPAGSIKDVSQFGMETVILHTALMLKKRIVVYHPKIEA
Formulation:	Liquid. Purified antibody supplied in 1x PBS buffer with 0.09% (w/v) sodium azide and 2% sucrose.
Purification:	Affinity Purified
Conjugation:	Unconjugated
Storage:	Store at -20°C as received.
Stability:	Stable for 12 months from date of receipt.
Predicted Protein Size:	40 kDa
Gene Name:	family with sequence similarity 45 member B, pseudogene
Database Link:	NP_060942 Entrez Gene 55855 Human
Background:	The function of this protein remains unknown.
Synonyms:	HT011
Note:	Immunogen Sequence Homology: Human: 100%; Dog: 93%; Pig: 93%; Rat: 93%; Horse: 93%; Bovine: 93%; Rabbit: 93%; Mouse: 92%; Guinea pig: 92%


[View online »](#)

Product images:



WB Suggested Anti-FAM45B Antibody Titration:
0.2-1 ug/ml; Positive Control: 293T cell lysate