

## Product datasheet for **TA344851**

### LRDD (PIDD1) Rabbit Polyclonal Antibody

#### Product data:

Product Type:	Primary Antibodies
Applications:	WB
Recommended Dilution:	WB
Reactivity:	Human
Host:	Rabbit
Isotype:	IgG
Clonality:	Polyclonal
Immunogen:	The immunogen for anti-LRDD antibody: synthetic peptide directed towards the N terminal of human LRDD. Synthetic peptide located within the following region: RLQGNPLGEASPDAPSSPVAALIPEMPRFLTSDLDFPVTTPQGCSVTLA
Formulation:	Liquid. Purified antibody supplied in 1x PBS buffer with 0.09% (w/v) sodium azide and 2% sucrose. <i>Note that this product is shipped as lyophilized powder to China customers.</i>
Purification:	Affinity Purified
Conjugation:	Unconjugated
Storage:	Store at -20°C as received.
Stability:	Stable for 12 months from date of receipt.
Predicted Protein Size:	83 kDa
Gene Name:	p53-induced death domain protein 1
Database Link:	<a href="#">NP_060964</a> <a href="#">Entrez Gene 55367 Human</a> <a href="#">Q9HB75</a>
Background:	The protein encoded by this gene contains a leucine-rich repeat and a death domain. This protein has been shown to interact with other death domain proteins, such as Fas (TNFRSF6)-associated via death domain (FADD) and MAP-kinase activating death domain-c
Synonyms:	DKFZp434D229; leucine-rich and death domain containing; leucine-rich repeats and death domain containing; leucine rich repeat and death domain containing protein; MGC16925; PIDD



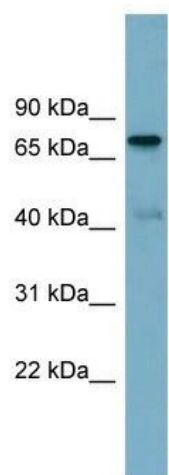
[View online »](#)

**Note:** Immunogen Sequence Homology: Rat: 100%; Human: 100%; Mouse: 86%

**Protein Families:** Druggable Genome

**Protein Pathways:** p53 signaling pathway

**Product images:**



WB Suggested Anti-LRDD Antibody Titration: 0.2-1 ug/ml; ELISA Titer: 1:1562500; Positive Control: Human Liver