

Product datasheet for **TA344850**

LRDD (PIDD1) Rabbit Polyclonal Antibody

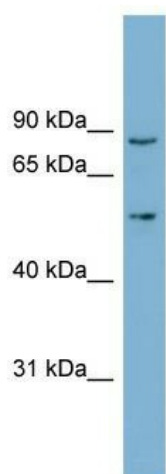
Product data:

Product Type:	Primary Antibodies
Applications:	WB
Recommended Dilution:	WB
Reactivity:	Human
Host:	Rabbit
Isotype:	IgG
Clonality:	Polyclonal
Immunogen:	The immunogen for anti-LRDD antibody: synthetic peptide directed towards the middle region of human LRDD. Synthetic peptide located within the following region: RRDPEQVLLQCLPRNKVDATLRLLERYRGPEPSDTVEMFEGEEFFAAFE
Formulation:	Liquid. Purified antibody supplied in 1x PBS buffer with 0.09% (w/v) sodium azide and 2% sucrose. <i>Note that this product is shipped as lyophilized powder to China customers.</i>
Purification:	Affinity Purified
Conjugation:	Unconjugated
Storage:	Store at -20°C as received.
Stability:	Stable for 12 months from date of receipt.
Predicted Protein Size:	83 kDa
Gene Name:	p53-induced death domain protein 1
Database Link:	NP_060964 Entrez Gene 55367 Human Q9HB75



[View online »](#)

- Background:** The protein encoded by this gene contains a leucine-rich repeat and a death domain. This protein has been shown to interact with other death domain proteins, such as Fas (TNFRSF6)-associated via death domain (FADD) and MAP-kinase activating death domain-containing protein (MADD), and thus may function as an adaptor protein in cell death-related signaling processes. The expression of the mouse counterpart of this gene has been found to be positively regulated by the tumor suppressor p53 and to induce cell apoptosis in response to DNA damage, which suggests a role for this gene as an effector of p53-dependent apoptosis. Three alternatively spliced transcript variants encoding distinct isoforms have been reported.
- Synonyms:** DKFZp434D229; leucine-rich and death domain containing; leucine-rich repeats and death domain containing; leucine rich repeat and death domain containing protein; MGC16925; PIDD
- Note:** Immunogen Sequence Homology: Pig: 100%; Rat: 100%; Human: 100%; Guinea pig: 100%; Dog: 93%; Bovine: 93%; Mouse: 86%
- Protein Families:** Druggable Genome
- Protein Pathways:** p53 signaling pathway

Product images:

WB Suggested Anti-LRDD Antibody Titration: 0.2-1 ug/ml; ELISA Titer: 1:312500; Positive Control: NCI-H226 cell lysate