

## Product datasheet for **TA344849**

### TMCO6 Rabbit Polyclonal Antibody

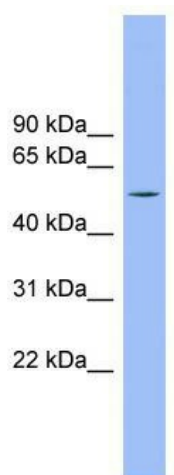
#### Product data:

Product Type:	Primary Antibodies
Applications:	WB
Recommended Dilution:	WB
Reactivity:	Human
Host:	Rabbit
Isotype:	IgG
Clonality:	Polyclonal
Immunogen:	The immunogen for anti-TMCO6 antibody: synthetic peptide directed towards the N terminal of human TMCO6. Synthetic peptide located within the following region: LRQAQRGTEEKEREGALVSLRRGLQHPETQQTFIRLEGSMRTLVLGLLTSN
Formulation:	Liquid. Purified antibody supplied in 1x PBS buffer with 0.09% (w/v) sodium azide and 2% sucrose. <i>Note that this product is shipped as lyophilized powder to China customers.</i>
Purification:	Affinity Purified
Conjugation:	Unconjugated
Storage:	Store at -20°C as received.
Stability:	Stable for 12 months from date of receipt.
Predicted Protein Size:	54 kDa
Gene Name:	transmembrane and coiled-coil domains 6
Database Link:	<a href="#">NP_060972</a> <a href="#">Entrez Gene 55374 Human Q96DC7</a>
Background:	The function of this protein remains unknown.
Synonyms:	PRO1580
Note:	Immunogen Sequence Homology: Dog: 100%; Pig: 100%; Horse: 100%; Human: 100%; Bovine: 100%; Rat: 93%; Mouse: 93%; Rabbit: 92%; Guinea pig: 92%



[View online »](#)

Product images:



WB Suggested Anti-TMCO6 Antibody Titration:  
0.2-1 ug/ml; Positive Control: Human Placenta