

Product datasheet for **TA344848**

KIAA1704 (GPALPP1) Rabbit Polyclonal Antibody

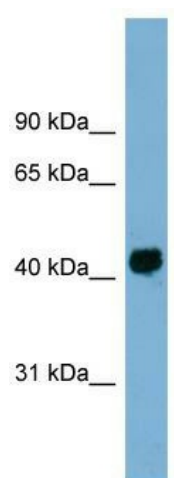
Product data:

| | |
|--------------------------------|--|
| Product Type: | Primary Antibodies |
| Applications: | WB |
| Recommended Dilution: | WB |
| Reactivity: | Human |
| Host: | Rabbit |
| Isotype: | IgG |
| Clonality: | Polyclonal |
| Immunogen: | The immunogen for anti-KIAA1704 antibody: synthetic peptide directed towards the middle region of human KIAA1704. Synthetic peptide located within the following region: KAAEDKNKPQERIPFDRDKDLKVNRFDEAQKKALIKKSRELNTRFSHGKG |
| Formulation: | Liquid. Purified antibody supplied in 1x PBS buffer with 0.09% (w/v) sodium azide and 2% sucrose. |
| Purification: | Affinity Purified |
| Conjugation: | Unconjugated |
| Storage: | Store at -20°C as received. |
| Stability: | Stable for 12 months from date of receipt. |
| Predicted Protein Size: | 38 kDa |
| Gene Name: | GPALPP motifs containing 1 |
| Database Link: | NP_061029 Entrez Gene 55425 Human Q8IXQ4 |
| Background: | The function of this protein remains unknown. |
| Synonyms: | AD029; bA245H20.2; KIAA1704; LSR7 |
| Note: | Immunogen Sequence Homology: Dog: 100%; Pig: 100%; Rat: 100%; Horse: 100%; Human: 100%; Mouse: 100%; Rabbit: 100%; Guinea pig: 100%; Zebrafish: 86% |



[View online »](#)

Product images:



WB Suggested Anti-KIAA1704 Antibody Titration:
0.2-1 ug/ml; Positive Control: Human Spleen