

## Product datasheet for **TA344843**

### Macro H2A.2 (H2AFY2) Rabbit Polyclonal Antibody

#### Product data:

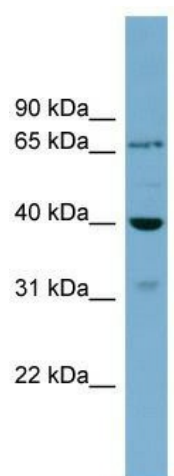
Product Type:	Primary Antibodies
Applications:	WB
Recommended Dilution:	WB
Reactivity:	Human
Host:	Rabbit
Isotype:	IgG
Clonality:	Polyclonal
Immunogen:	The immunogen for anti-H2AFY2 antibody: synthetic peptide directed towards the middle region of human H2AFY2. Synthetic peptide located within the following region: KKGGKKSAAKPRTSKSKPKDSDKEGTSNSTSEDGPGDGFTILSSKSLV
Formulation:	Liquid. Purified antibody supplied in 1x PBS buffer with 0.09% (w/v) sodium azide and 2% sucrose. <i>Note that this product is shipped as lyophilized powder to China customers.</i>
Purification:	Affinity Purified
Conjugation:	Unconjugated
Storage:	Store at -20°C as received.
Stability:	Stable for 12 months from date of receipt.
Predicted Protein Size:	40 kDa
Gene Name:	H2A histone family member Y2
Database Link:	<a href="#">NP_061119</a> <a href="#">Entrez Gene 55506 Human Q9P0M6</a>
Background:	H2AFY2 is the variant histone H2A which replaces conventional H2A in a subset of nucleosomes where it represses transcription. Nucleosomes wrap and compact DNA into chromatin, limiting DNA accessibility to the cellular machineries which require DNA as a t
Synonyms:	macroH2A2
Note:	Immunogen Sequence Homology: Dog: 100%; Pig: 100%; Rat: 100%; Human: 100%; Mouse: 100%; Bovine: 100%; Guinea pig: 100%; Horse: 93%; Rabbit: 86%



[View online »](#)

Protein Pathways: Systemic lupus erythematosus

### Product images:



WB Suggested Anti-H2AFY2 Antibody Titration:  
0.2-1 ug/ml; ELISA Titer: 1:62500; Positive Control:  
Jurkat cell lysate