

Product datasheet for **TA344840**

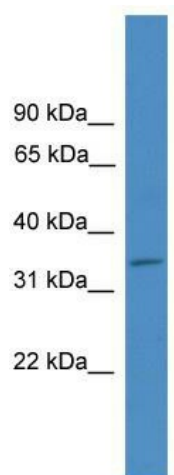
ELMOD1 Rabbit Polyclonal Antibody

Product data:

Product Type:	Primary Antibodies
Applications:	WB
Recommended Dilution:	WB
Reactivity:	Human
Host:	Rabbit
Isotype:	IgG
Clonality:	Polyclonal
Immunogen:	The immunogen for anti-ELMOD1 antibody: synthetic peptide directed towards the middle region of human ELMOD1. Synthetic peptide located within the following region: CYNTKPGASRTMKIETSLRDSKSKLLQTSVSVHPDAIEKTIEDIMELKKI
Formulation:	Liquid. Purified antibody supplied in 1x PBS buffer with 0.09% (w/v) sodium azide and 2% sucrose. <i>Note that this product is shipped as lyophilized powder to China customers.</i>
Purification:	Affinity Purified
Conjugation:	Unconjugated
Storage:	Store at -20°C as received.
Stability:	Stable for 12 months from date of receipt.
Predicted Protein Size:	36 kDa
Gene Name:	ELMO domain containing 1
Database Link:	NP_001123509 Entrez Gene 55531 Human Q8N336
Background:	The function of ELMOD1 remains unknown.
Synonyms:	DKFZp547C176
Note:	Immunogen Sequence Homology: Dog: 100%; Pig: 100%; Rat: 100%; Horse: 100%; Human: 100%; Mouse: 100%; Bovine: 100%; Rabbit: 100%; Guinea pig: 100%



[View online »](#)

Product images:

WB Suggested Anti-ELMOD1 Antibody Titration:
0.2-1 ug/ml; ELISA Titer: 1:1562500; Positive
Control: Human kidney