

## Product datasheet for **TA344837**

### RCC2 Rabbit Polyclonal Antibody

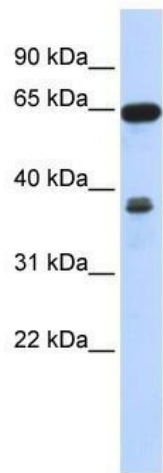
#### Product data:

Product Type:	Primary Antibodies
Applications:	IP, WB
Recommended Dilution:	WB, IP
Reactivity:	Human, Mouse
Host:	Rabbit
Isotype:	IgG
Clonality:	Polyclonal
Immunogen:	The immunogen for anti-RCC2 antibody: synthetic peptide directed towards the middle region of human RCC2. Synthetic peptide located within the following region: RIRSLACGKSSIIVADESTISWGPSPTFGELGYGDHKPKSSTAAQEVKT
Formulation:	Liquid. Purified antibody supplied in 1x PBS buffer with 0.09% (w/v) sodium azide and 2% sucrose. <i>Note that this product is shipped as lyophilized powder to China customers.</i>
Purification:	Affinity Purified
Conjugation:	Unconjugated
Storage:	Store at -20°C as received.
Stability:	Stable for 12 months from date of receipt.
Predicted Protein Size:	56 kDa
Gene Name:	regulator of chromosome condensation 2
Database Link:	<a href="#">NP_061185</a> <a href="#">Entrez Gene 108911 Mouse</a> <a href="#">Entrez Gene 55920 Human</a> <a href="#">Q9P258</a>
Background:	RCC2 is required for completion of mitosis and cytokinesis. RCC2 may function as a guanine nucleotide exchange factor for the small GTPase RAC1.
Synonyms:	TD-60
Note:	Immunogen Sequence Homology: Dog: 100%; Pig: 100%; Rat: 100%; Horse: 100%; Human: 100%; Mouse: 100%; Bovine: 100%; Rabbit: 100%; Guinea pig: 100%; Zebrafish: 86%



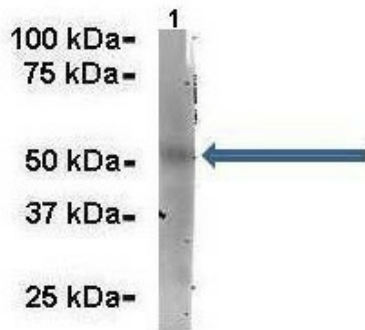
[View online »](#)

Product images:



WB Suggested Anti-RCC2 Antibody Titration: 0.2-1 ug/ml; ELISA Titer: 1:1562500; Positive Control: 293T cell lysate

RCC2



Amount and Sample Type : 500 ug mouse brain homogenate; Amount of IP Antibody : 6 ug; Primary Antibody : RCC2; Primary Antibody Dilution : 1:500; Secondary Antibody : Goat anti-rabbit Alexa-Fluor 594; Secondary Antibody Dilution : 1:5000; Gene Name : RCC2