

Product datasheet for **TA344835**

KLHL9 Rabbit Polyclonal Antibody

Product data:

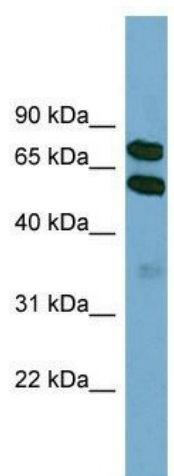
Product Type:	Primary Antibodies
Applications:	WB
Recommended Dilution:	WB
Reactivity:	Human
Host:	Rabbit
Isotype:	IgG
Clonality:	Polyclonal
Immunogen:	The immunogen for anti-KLHL9 antibody: synthetic peptide directed towards the middle region of human KLHL9. Synthetic peptide located within the following region: SALKGHLYAVGGRSAAGELATVECYNPRMNEWSYVAKMSEPHYGHAGTVY
Formulation:	Liquid. Purified antibody supplied in 1x PBS buffer with 0.09% (w/v) sodium azide and 2% sucrose. <i>Note that this product is shipped as lyophilized powder to China customers.</i>
Purification:	Affinity Purified
Conjugation:	Unconjugated
Storage:	Store at -20°C as received.
Stability:	Stable for 12 months from date of receipt.
Predicted Protein Size:	69 kDa
Gene Name:	kelch like family member 9
Database Link:	NP_061335 Entrez Gene 55958 Human Q9P2J3
Background:	KLHL9 is the substrate-specific adapter for a CUL3-based E3 ubiquitin-protein ligase complex. Within this complex, KLHL9 controls the dynamic behavior of AURKB on mitotic chromosomes and thereby coordinates faithful mitotic progression and completion of c
Synonyms:	RP11-380P16.6
Note:	Immunogen Sequence Homology: Pig: 100%; Rat: 100%; Human: 100%; Mouse: 100%; Bovine: 100%; Rabbit: 100%; Zebrafish: 93%; Dog: 86%; Horse: 86%; Guinea pig: 86%



[View online »](#)

Protein Pathways: Ubiquitin mediated proteolysis

Product images:



WB Suggested Anti-KLHL9 Antibody Titration: 0.2-1 ug/ml; Positive Control: HepG2 cell lysate