

Product datasheet for **TA344834**

SNTG1 Rabbit Polyclonal Antibody

Product data:

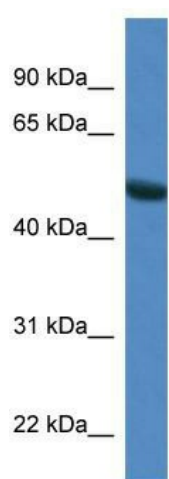
Product Type:	Primary Antibodies
Applications:	WB
Recommended Dilution:	WB
Reactivity:	Mouse
Host:	Rabbit
Isotype:	IgG
Clonality:	Polyclonal
Immunogen:	The immunogen for anti-Sntg1 antibody: synthetic peptide corresponding to a region of Mouse. Synthetic peptide located within the following region: KLPVNEDCACAPSDQSSGTSSPLCDSGLHLNYHPNNTDTLSCSSWPTSPG
Formulation:	Liquid. Purified antibody supplied in 1x PBS buffer with 0.09% (w/v) sodium azide and 2% sucrose. <i>Note that this product is shipped as lyophilized powder to China customers.</i>
Purification:	Affinity Purified
Conjugation:	Unconjugated
Storage:	Store at -20°C as received.
Stability:	Stable for 12 months from date of receipt.
Predicted Protein Size:	57 kDa
Gene Name:	syntrophin gamma 1
Database Link:	NP_061840 Entrez Gene 71096 Mouse Q9NSN8
Background:	Sntg1 is an adapter protein that binds to and probably organizes the subcellular localization of a variety of proteins. It may link various receptors to the actin cytoskeleton and the dystrophin glycoprotein complex. It may participate in regulating the subcellular location of diacylglycerol kinase-zeta to ensure that diacylglycerol is rapidly inactivated following receptor activation.
Synonyms:	G1SYN; SYN4



[View online »](#)

Note: Immunogen Sequence Homology: Dog: 100%; Rat: 100%; Horse: 100%; Human: 100%; Mouse: 100%; Bovine: 100%; Rabbit: 100%; Zebrafish: 100%

Product images:



WB Suggested Anti-Sntg1 Antibody; Titration: 1.0 ug/ml; Positive Control: Mouse Pancreas