

## Product datasheet for **TA344833**

### SNTG1 Rabbit Polyclonal Antibody

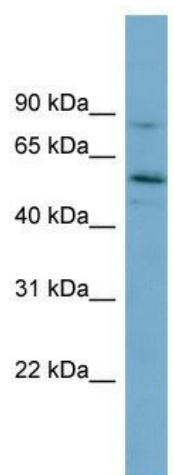
#### Product data:

Product Type:	Primary Antibodies
Applications:	WB
Recommended Dilution:	WB
Reactivity:	Human
Host:	Rabbit
Isotype:	IgG
Clonality:	Polyclonal
Immunogen:	The immunogen for anti-SNTG1 antibody: synthetic peptide directed towards the middle region of human SNTG1. Synthetic peptide located within the following region: RFSQYVPGTDLRQNAFQVIAVDGVCTGIIQLSAEDCVDWLQAIATNIS
Formulation:	Liquid. Purified antibody supplied in 1x PBS buffer with 0.09% (w/v) sodium azide and 2% sucrose. <i>Note that this product is shipped as lyophilized powder to China customers.</i>
Purification:	Affinity Purified
Conjugation:	Unconjugated
Storage:	Store at -20°C as received.
Stability:	Stable for 12 months from date of receipt.
Predicted Protein Size:	58 kDa
Gene Name:	syntrophin gamma 1
Database Link:	<a href="#">NP_061840</a> <a href="#">Entrez Gene 54212 Human</a> <a href="#">Q9NSN8</a>
Background:	The protein encoded by this gene is a member of the syntrophin family. Syntrophins are cytoplasmic peripheral membrane proteins that typically contain 2 pleckstrin homology (PH) domains, a PDZ domain that bisects the first PH domain, and a C-terminal domain
Synonyms:	G1SYN; SYN4
Note:	Immunogen Sequence Homology: Dog: 100%; Rat: 100%; Horse: 100%; Human: 100%; Mouse: 100%; Bovine: 93%; Rabbit: 93%; Zebrafish: 86%



[View online »](#)

## Product images:



WB Suggested Anti-SNTG1 Antibody Titration:  
0.2-1 ug/ml; ELISA Titer: 1:12500; Positive Control:  
HepG2 cell lysate