

Product datasheet for **TA344831**

RAP1 (TERF2IP) Rabbit Polyclonal Antibody

Product data:

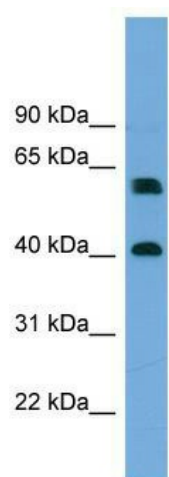
Product Type:	Primary Antibodies
Applications:	WB
Recommended Dilution:	WB
Reactivity:	Human
Host:	Rabbit
Isotype:	IgG
Clonality:	Polyclonal
Immunogen:	The immunogen for anti-TERF2IP antibody: synthetic peptide directed towards the middle region of human TERF2IP. Synthetic peptide located within the following region: EDPEAADSGEPQNKRTDLP EEEEYVKEEIQENEEAVKKMLVEATREFEEV
Formulation:	Liquid. Purified antibody supplied in 1x PBS buffer with 0.09% (w/v) sodium azide and 2% sucrose. <i>Note that this product is shipped as lyophilized powder to China customers.</i>
Purification:	Affinity Purified
Conjugation:	Unconjugated
Storage:	Store at -20°C as received.
Stability:	Stable for 12 months from date of receipt.
Predicted Protein Size:	44 kDa
Gene Name:	TERF2 interacting protein
Database Link:	NP_061848 Entrez Gene 54386 Human Q9NYB0
Background:	The gene encodes a protein that is part of a complex involved in telomere length regulation. Pseudogenes are present on chromosomes 5 and 22.
Synonyms:	DRIP5; RAP1
Note:	Immunogen Sequence Homology: Dog: 100%; Pig: 100%; Rat: 100%; Horse: 100%; Human: 100%; Mouse: 100%; Bovine: 100%; Rabbit: 93%; Guinea pig: 93%; Zebrafish: 83%



[View online »](#)

Protein Families: Transcription Factors

Product images:



WB Suggested Anti-TERF2IP Antibody Titration:
0.2-1 ug/ml; Positive Control: MCF7 cell
lysate TERF2IP is supported by BioGPS gene
expression data to be expressed in MCF7