

Product datasheet for **TA344830**

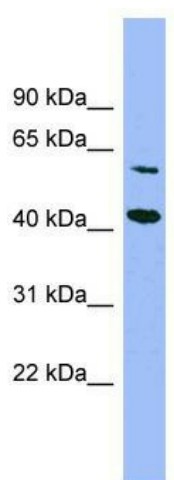
GFOD1 Rabbit Polyclonal Antibody

Product data:

Product Type:	Primary Antibodies
Applications:	WB
Recommended Dilution:	WB
Reactivity:	Human
Host:	Rabbit
Isotype:	IgG
Clonality:	Polyclonal
Immunogen:	The immunogen for anti-GFOD1 antibody: synthetic peptide directed towards the middle region of human GFOD1. Synthetic peptide located within the following region: NSLLPEKAFSDIPSPYLRGTIKMMQAVRQAFQDQDDRRRTWDGRPLTMAAT
Formulation:	Liquid. Purified antibody supplied in 1x PBS buffer with 0.09% (w/v) sodium azide and 2% sucrose.
Purification:	Affinity Purified
Conjugation:	Unconjugated
Storage:	Store at -20°C as received.
Stability:	Stable for 12 months from date of receipt.
Predicted Protein Size:	43 kDa
Gene Name:	glucose-fructose oxidoreductase domain containing 1
Database Link:	NP_061861 Entrez Gene 54438 Human Q9NXC2
Background:	The function of this protein remains unknown.
Synonyms:	ADG-90; C6orf114
Note:	Immunogen Sequence Homology: Dog: 100%; Pig: 100%; Rat: 100%; Horse: 100%; Human: 100%; Mouse: 100%; Rabbit: 86%; Guinea pig: 86%; Zebrafish: 85%



[View online »](#)

Product images:


WB Suggested Anti-GFOD1 Antibody Titration:
0.2-1 ug/ml; Positive Control: HepG2 cell
lysateGFOD1 is supported by BioGPS gene
expression data to be expressed in HepG2