

Product datasheet for **TA344827**

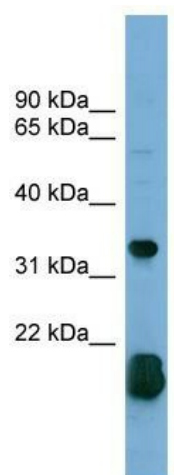
RHOF Rabbit Polyclonal Antibody

Product data:

Product Type:	Primary Antibodies
Applications:	WB
Recommended Dilution:	WB
Reactivity:	Human
Host:	Rabbit
Isotype:	IgG
Clonality:	Polyclonal
Immunogen:	The immunogen for anti-RHOF antibody: synthetic peptide directed towards the middle region of human RHOF. Synthetic peptide located within the following region: DNVLIKWFPEVTHFCRGIPMVLIGCKTDLRKDKEQLRKLRAAQLEPITYM
Formulation:	Liquid. Purified antibody supplied in 1x PBS buffer with 0.09% (w/v) sodium azide and 2% sucrose. <i>Note that this product is shipped as lyophilized powder to China customers.</i>
Purification:	Affinity Purified
Conjugation:	Unconjugated
Storage:	Store at -20°C as received.
Stability:	Stable for 12 months from date of receipt.
Predicted Protein Size:	23 kDa
Gene Name:	ras homolog family member F (in filopodia)
Database Link:	NP_061907 Entrez Gene 54509 Human Q9HBH0
Background:	RHOF is a plasma membrane-associated small GTPase which cycles between an active GTP-bound and an inactive GDP-bound state. RHOF causes the formation of thin, actin-rich surface projections called filopodia. RHOF functions cooperatively with CDC42 and Rac
Synonyms:	ARHF; RIF
Note:	Immunogen Sequence Homology: Dog: 100%; Pig: 100%; Rat: 100%; Horse: 100%; Human: 100%; Mouse: 100%; Sheep: 100%; Bovine: 100%; Rabbit: 100%; Guinea pig: 100%; Goat: 83%



[View online »](#)

Product images:

WB Suggested Anti-RHOF Antibody Titration: 0.2-1 ug/ml; Positive Control: 293T cell lysate