

Product datasheet for **TA344826**

RIAM (APBB1IP) Rabbit Polyclonal Antibody

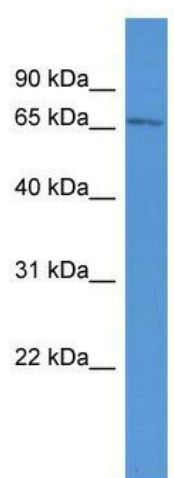
Product data:

Product Type:	Primary Antibodies
Applications:	WB
Recommended Dilution:	WB
Reactivity:	Rat
Host:	Rabbit
Isotype:	IgG
Clonality:	Polyclonal
Immunogen:	The immunogen for anti-Apbb1ip antibody: synthetic peptide corresponding to a region of Rat. Synthetic peptide located within the following region: PPREFNFNSVGFKDLNESLNALEDQDLDMADLVADISEAEQRTIQAQK
Formulation:	Liquid. Purified antibody supplied in 1x PBS buffer with 0.09% (w/v) sodium azide and 2% sucrose. <i>Note that this product is shipped as lyophilized powder to China customers.</i>
Purification:	Affinity Purified
Conjugation:	Unconjugated
Storage:	Store at -20°C as received.
Stability:	Stable for 12 months from date of receipt.
Predicted Protein Size:	74 kDa
Gene Name:	amyloid beta precursor protein binding family B member 1 interacting protein
Database Link:	NP_061916 Entrez Gene 307171 Rat Q7Z5R6
Background:	The function of Apbb1ip remains unknown.
Synonyms:	INAG1; PREL1; RARP1; RIAM
Note:	Immunogen Sequence Homology: Dog: 100%; Pig: 100%; Rat: 100%; Horse: 100%; Human: 100%; Mouse: 100%; Bovine: 100%; Rabbit: 100%; Guinea pig: 100%; Zebrafish: 86%



[View online »](#)

Product images:



WB Suggested Anti-Appb1ip Antibody Titration:
0.2-1 ug/ml; ELISA Titer: 1:312500; Positive
Control: Rat Liver