

Product datasheet for **TA344825**

RIAM (APBB1IP) Rabbit Polyclonal Antibody

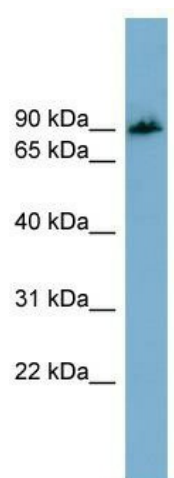
Product data:

Product Type:	Primary Antibodies
Applications:	WB
Recommended Dilution:	WB
Reactivity:	Human
Host:	Rabbit
Isotype:	IgG
Clonality:	Polyclonal
Immunogen:	The immunogen for anti-APBB1IP antibody: synthetic peptide directed towards the N terminal of human APBB1IP. Synthetic peptide located within the following region: LVADISEAEQRTIQAQKESLQNHHSASLQASIFSGAASLGYGTVNVAATG
Formulation:	Liquid. Purified antibody supplied in 1x PBS buffer with 0.09% (w/v) sodium azide and 2% sucrose. <i>Note that this product is shipped as lyophilized powder to China customers.</i>
Purification:	Affinity Purified
Conjugation:	Unconjugated
Storage:	Store at -20°C as received.
Stability:	Stable for 12 months from date of receipt.
Predicted Protein Size:	73 kDa
Gene Name:	amyloid beta precursor protein binding family B member 1 interacting protein
Database Link:	NP_061916 Entrez Gene 54518 Human Q7Z5R6
Background:	APBB1IP appears to function in the signal transduction from Ras activation to actin cytoskeletal remodeling. APBB1IP suppresses insulin-induced promoter activities through AP1 and SRE. APBB1IP mediates Rap1-induced adhesion.
Synonyms:	INAG1; PREL1; RARP1; RIAM
Note:	Immunogen Sequence Homology: Dog: 100%; Pig: 100%; Rat: 100%; Human: 100%; Mouse: 100%; Bovine: 100%; Rabbit: 100%; Guinea pig: 100%; Horse: 93%



[View online »](#)

Product images:



WB Suggested Anti-APBB1IP Antibody Titration:
0.2-1 ug/ml; Positive Control: 721_B cell
lysateAPBB1IP is supported by BioGPS gene
expression data to be expressed in 721_B