

Product datasheet for **TA344824**

EXOC6 Rabbit Polyclonal Antibody

Product data:

Product Type:	Primary Antibodies
Applications:	WB
Recommended Dilution:	WB
Reactivity:	Human, Mouse
Host:	Rabbit
Isotype:	IgG
Clonality:	Polyclonal
Immunogen:	The immunogen for anti-EXOC6 antibody: synthetic peptide directed towards the N terminal of human EXOC6. Synthetic peptide located within the following region: MLEEETDQTYENVLAELIQSFELPVEATLRSYDDQPNAHKKFMEKLDACI
Formulation:	Liquid. Purified antibody supplied in 1x PBS buffer with 0.09% (w/v) sodium azide and 2% sucrose.
Purification:	Affinity Purified
Conjugation:	Unconjugated
Storage:	Store at -20°C as received.
Stability:	Stable for 12 months from date of receipt.
Predicted Protein Size:	88 kDa
Gene Name:	exocyst complex component 6
Database Link:	NP_001013870 Entrez Gene 107371 Mouse Entrez Gene 54536 Human Q8TAG9
Background:	The product of this gene belongs to the SEC15 family. It is highly similar to the protein encoded by <i>Saccharomyces cerevisiae</i> SEC15 gene. This protein is essential for vesicular traffic from the Golgi apparatus to the cell surface in yeast. It is one of the components of a multiprotein complex required for exocytosis. Alternatively spliced transcript variants encoding different isoforms have been identified.
Synonyms:	EXOC6A; SEC15; SEC15L; SEC15L1; SEC15L3; Sec15p

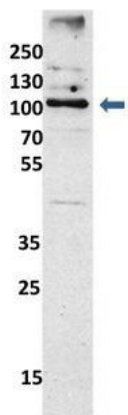


[View online »](#)

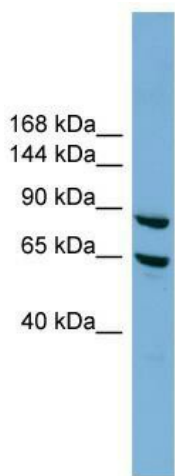
Note: Immunogen Sequence Homology: Dog: 100%; Pig: 100%; Rat: 100%; Human: 100%; Mouse: 100%; Bovine: 100%; Rabbit: 100%; Guinea pig: 100%; Zebrafish: 93%

Product images:

EXOC6



Sample Type: mouse fibroblast lysate (20ug);
Primary Dilution: 1:1000 (2% milk); Secondary
Dilution: 1:2000 (5% milk); Image Submitted By:
Anonymous researcher ; ; See Customer
Feedback tab for detailed information.;



WB Suggested Anti-EXOC6 Antibody Titration: 0.2-
1 ug/ml; Positive Control: HepG2 cell lysate