

## Product datasheet for **TA344823**

### EXOC6 Rabbit Polyclonal Antibody

#### Product data:

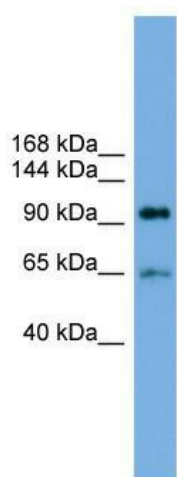
|                         |  |
|-------------------------|--|
| Product Type:           | Primary Antibodies   |
| Applications:           | WB   |
| Recommended Dilution:   | WB   |
| Reactivity:             | Human  |
| Host:                   | Rabbit   |
| Isotype:                | IgG  |
| Clonality:              | Polyclonal   |
| Immunogen:              | The immunogen for anti-EXOC6 antibody: synthetic peptide directed towards the middle region of human EXOC6. Synthetic peptide located within the following region: YRCLHIYSVLGDEETFENYRKQRKKQARLVLQPQSNMHETVDGYRRYFT   |
| Formulation:            | Liquid. Purified antibody supplied in 1x PBS buffer with 0.09% (w/v) sodium azide and 2% sucrose.  |
| Purification:           | Affinity Purified  |
| Conjugation:            | Unconjugated   |
| Storage:                | Store at -20°C as received.  |
| Stability:              | Stable for 12 months from date of receipt.   |
| Predicted Protein Size: | 94 kDa   |
| Gene Name:              | exocyst complex component 6  |
| Database Link:          | <a href="#">NP_061926</a><br><a href="#">Entrez Gene 54536 Human</a><br><a href="#">Q8TAG9</a>   |
| Background:             | The product of this gene belongs to the SEC15 family. It is highly similar to the protein encoded by <i>Saccharomyces cerevisiae</i> SEC15 gene. This protein is essential for vesicular traffic from the Golgi apparatus to the cell surface in yeast. It is one of the components of a multiprotein complex required for exocytosis. Alternatively spliced transcript variants encoding different isoforms have been identified. |
| Synonyms:               | EXOC6A; SEC15; SEC15L; SEC15L1; SEC15L3; Sec15p  |



[View online »](#)

**Note:** Immunogen Sequence Homology: Dog: 100%; Pig: 100%; Rat: 100%; Horse: 100%; Human: 100%; Mouse: 100%; Bovine: 100%; Rabbit: 100%; Zebrafish: 100%; Guinea pig: 100%

### Product images:



WB Suggested Anti-EXOC6 Antibody Titration: 0.2-1 ug/ml; Positive Control: Human Small Intestine