

Product datasheet for **TA344822**

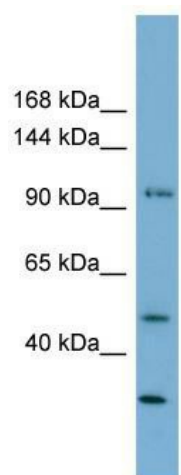
FAM35A Rabbit Polyclonal Antibody

Product data:

Product Type:	Primary Antibodies
Applications:	WB
Recommended Dilution:	WB
Reactivity:	Human
Host:	Rabbit
Isotype:	IgG
Clonality:	Polyclonal
Immunogen:	The immunogen for anti-FAM35A antibody: synthetic peptide directed towards the N terminal of human FAM35A. Synthetic peptide located within the following region: PDLSGHFLANCMNRHVHVKDDFVRSVSETQNIESQKIHSSRLSDITSSNM
Formulation:	Liquid. Purified antibody supplied in 1x PBS buffer with 0.09% (w/v) sodium azide and 2% sucrose. <i>Note that this product is shipped as lyophilized powder to China customers.</i>
Purification:	Affinity Purified
Conjugation:	Unconjugated
Storage:	Store at -20°C as received.
Stability:	Stable for 12 months from date of receipt.
Predicted Protein Size:	94 kDa
Gene Name:	family with sequence similarity 35 member A
Database Link:	NP_061927 Entrez Gene 54537 Human Q86V20
Background:	The function of this protein remains unknown.
Synonyms:	bA163M19.1; FAM35A1
Note:	Immunogen Sequence Homology: Human: 100%



[View online »](#)

Product images:

WB Suggested Anti-FAM35A Antibody Titration:
0.2-1 ug/ml; Positive Control: MCF7 cell lysate